

DETERMINATION OF CHARACTERISTIC VOLATILE COMPOUNDS OF MONOFLORAL CHENOPODIACEAE HONEY BY SPME-GC-MS

by Jana Publication & Research

Submission date: 15-Jul-2025 12:19PM (UTC+0700)

Submission ID: 2690367874

File name: IJAR-52819.docx (194.41K)

Word count: 2915

Character count: 17508

DETERMINATION OF CHARACTERISTIC VOLATILE COMPOUNDS OF MONOFLORAL CHENOPODIACEAE HONEY BY SPME-GC-MS

Abstract

Background: Honey has been used for centuries as a food and for medicinal purposes. Various analyses are performed to determine the origin of honey, which is classified as blossom honey, secretion honey, and mixed honey.

Methods: The pollen analysis in blossom honeys determines the nectar source and pollen content. The chemical composition and volatile aroma compounds of honey can be determined using the headspace solid phase micro extraction (HS-SPME) method. Volatile compounds are the key factors that determine the aroma, flavor, odor, antioxidant activity, and phenolic content of honey.

Results: In this study, a honey sample obtained from Burdur province of Türkiye, was examined using melisopalynological analysis and was identified as monofloral Chenopodiaceae honey. The high predominant pollen content in Chenopodiaceae honey increased the reliability of the identification (95.90%). A total of 32 volatile compounds were identified in the honey sample. 1-Hexanol, 1,5,7-Octatrien-3-ol, 3,7-dimethyl-, 1-Heptanol, and Linalool are the most abundant marker volatile compounds in Chenopodiaceae honey.

Conclusion: It is thought that monofloral Chenopodiaceae honey, whose authentication was confirmed for the first time by this study, will lead to further research.

Keywords: Chenopodiaceae honey, authentication, volatile compounds, SPME-GC-MS

Introduction

Honey is a sweet, nutritionally valuable animal product produced by honeybees from two different sources. Honeybees produce blossom honeys by collecting flower nectar, and secretion honeys from the secretions of plants or insects living on plants (Bogdanov et al., 2008). In addition to its high carbohydrate content, honey also contains other nutrients such as protein, vitamins, and minerals. The organic acids, phenolic substances, flavonoids, and enzymes in its structure are effective in honey's strong antioxidant properties and in preventing and treating diseases (Al-Mamary et al., 2002; Alvarez-Suarez et al., 2010). The

chemical composition and sensory properties of honey vary according to geographical location, vegetation, flora, and climatic conditions. In particular, the taste, smell, aroma, and health effects of blossom honey depend on the nectar source and botanical origin. In this respect, monofloral honeys exhibit specific characteristics (Molan and Cooper, 2000; Noori et al., 2013). Blossom honeys are named according to the type of plant source they contain and the percentage of pollen. Honeys that do not have a dominant pollen type are defined as multifloral honey. In normal monofloral honeys, the pollen content must be at least 45% (Melliou and Chinou, 2011). Pollen type and content can be determined through melissopalynological analysis to determine the authentic origin of honey. In addition to pollen analysis, physicochemical or chromatographic techniques can also be used in the identification of honey. Volatile compounds of honey are determined by chromatographic analysis. The volatile compounds affect the aroma and flavor characteristics of honey. The detected specific compounds are useful in the botanical classification of honey and are reported as fingerprints/markers (Escriche et al., 2017; Cuvaz-Glory et al., 2007). Zhu et al. (2022) reported that hexanal, hexanol, heptanol and methyl enanthate were the discriminatory compounds in the authentication of lavender honey using headspace solid-phase microextraction (HS-SPME).

The Chenopodiaceae (goosefoot) family is generally succulent or jointed herbs and shrubs. Most of its species are weedy, and it is a family with few vegetables and field crops. Spinach, chard, sugar beet, quinoa, sea purslane are some of them. Medicinal plants of the Chenopodiaceae family have antidiabetic effects with the bioactive compounds they contain. They stimulate insulin secretion, enhance glucose uptake and inhibit gluconeogenesis (Rubatzky and Yamaguchi, 1997; Cherrada et al., 2024). The Poaceae family is one of the largest plant families. This family, which is the main source of human and animal nutrition, includes grains such as wheat, rice, rye, corn, millet, oats, and barley (Al-hassnwy and HasanAl-nomani, 2021).

Türkiye, with its rich flora, has the potential to produce abundant blossom honey. The most well-known and researched blossom honeys are astragalus, lavender, thyme, chestnut, citrus, sunflower, and black cumin honeys (Kayacier and Karaman, 2008). A total of 95.492 tons of honey was produced in Türkiye in 2024. Burdur province is one of the leading provinces of the Mediterranean Region of Türkiye in the fields of agriculture and animal husbandry. In 2024, 185 tons of honey were produced in Burdur (TUIK, 2025).

In this study, a blossom honey produced in Burdur was identified by determining its pollen content using melissopalynological analysis. The volatile compound profile of the honey sample was characterized by HS-SPME-GC-MS analysis.

Material and Methods

Honey sample

The honey sample was obtained from a beekeeper in Büğdüz village of Burdur province. The freshly collected honey sample was placed in a dark glass jar and analyzed without waiting.

Melissopalynological analysis

Pollen types and amounts in the honey sample were determined by melissopalynological analysis. For this purpose, 10 grams of honey sample was mixed with 10 mL of distilled water and dissolved by heating at 50 °C. The mixture was centrifuged at 3500 rpm for 45 minutes and the supernatant was poured off. The sediment was mixed with glycerin-gelatin matrix and transferred to glass slide. Approximately 300 pollen grains were counted and each plant taxa's pollen frequency was expressed as a percentage of the total pollen. The frequency classes were determined as follows: Predominant pollen more than 45%, secondary pollen 16-45%, important minor pollen 3-15%, minor pollen less than 3% (Louveaux et al., 1978).

Analysis of volatile compounds

Headspace solid phase micro extraction (HS-SPME) method was used to determine the volatile compounds of the honey sample (Agilent 7890B GC, 7010B MS, USA). 3.5 g of sample and 1.1 mL of water were placed in a 20 mL vial and held at 60 °C for 15 minutes. Afterward, the volatile compounds were adsorbed using a 50/30 μ m Divinylbenzene/Carboxene/Polydimethylsiloxane (DVB/CAR/PDMS, 1 cm) coated fiber for 30 minutes using a Solid Phase Micro Extraction (SPME) apparatus. The sample was then desorbed for 5 minutes before being injected into a DB-Wax (60 m x 0.25 mm i.d x 0.25 μ m, J&W Scientific-Folsom, USA) capillary column. The injection temperature was 250 °C, the column temperature was increased at 40 °C for 4 minutes, then increased by 3 °C per minute to 90 °C, and then by 4 °C per minute to 130 °C. After holding at this temperature for 4 minutes, the temperature was increased by 5 °C per minute to 240 °C and held at this temperature for 8 minutes. Helium was used as the carrier gas. The electron energy was 70 eV and the mass range was 30-600 m/z. It was injected spitless. The volatiles were then

quantified utilizing the internal standard with 3-Heptanone, 2-methyl- (10 μ L) (Xagoraris et al., 2021).

Results and discussions

Melissopalynological analysis

The pollen types and percentages were determined by the melissopalynological analysis used in the identification of honey. The results of the analysis were shown in Table 1. The honey sample contained a high amount of pollen from the Chenopodiaceae family (95.90%) and being the major pollen, it enables the honey to be defined as monofloral. The honey with two taxa counts, there is 4.10% Poaceae pollen as minor pollen. The palynological origin of a honey is closely related to the geographic region, the flora of the region and the time of pollen collection. Flora, consisting of plants, wildflowers, fruit trees, vegetable flowers, is a source of raw materials for bees (Can et al., 2015; Bolukbasi, 2009). When the flora of the region where the honey was collected was examined, wheat, corn, fruit and vegetable cultivation was identified. In a study examining the pollen analysis of honey from Burdur province, low levels of Chenopodiaceae pollen were found in 7 out of 20 samples (0.015-4.03%). Pollen belonging to the Poaceae family was identified in 11 samples (Taşkın and İnce, 2009).

Table 1. Melissopalynological results of the honey sample

Predominant pollen (>45%)	Secondary pollen (16-45%)	Important minor pollen (3-15%)	Minor pollen (<3%)	Plant taxa number	Honey type
Chenopodiaceae 95.90%	-	Poaceae 4.10%	-	2	Monofloral Chenopodiaceae honey

Volatile compounds of Chenopodiaceae honey

Volatile compounds, especially in blossom honeys, are trace components that determine the taste, aroma, phenolic content, and antioxidant properties of honey (Cianciosi et al., 2018). The volatile compounds of Chenopodiaceae honey were analyzed by gas chromatography-mass spectroscopy (GC-MS) using the HS-SPME method. The characteristic chromatogram of volatile compounds was given in Figure 1. According to the analysis, 32 volatile compounds were identified in the honey sample. These compounds were listed in Table 2 and ranked from highest to lowest concentration. The identified compound groups include aldehydes, ketones, terpenes, alcohols, and esters. The compound with the highest

concentration is 1-Hexanol. Esriche et al. (2017) reported that 1-Hexanol was significantly higher in lavender honey and that this could be a typical marker for lavender honey. Similarly, among monofloral honeys, hexanol concentration was found to be 281 $\mu\text{g/kg}$ in lavender honey, while it was not detected in citrus and heather honeys (Castro-Vazquez et al., 2009). When other alcohols and their amounts are examined (1,5,7-Octatrien-3-ol, 3,7-dimethyl-,1-Heptanol, Linalool, Thymol, Levomenthol, 1-Nonanol, 1-Hexanol, 4-methyl-, (S)-), it can be said that the alcohol group is dominant in this study. According to the volatile compound analysis of quinoa species, a pseudograin from the Chenopodiaceae family, it was revealed that the aldehyde group was more abundant/dominant. In white, red and black quinoa, a total of 28 characteristic volatile compounds were detected. Aldehydes (23.99%-36.81%), alcohols (22.65%-26.50%), ketones (12.30%-19.97%), acids (9.69%-10.10%) and esters (13.30%-30.99%) were found common in quinoas (Song et al., 2021).

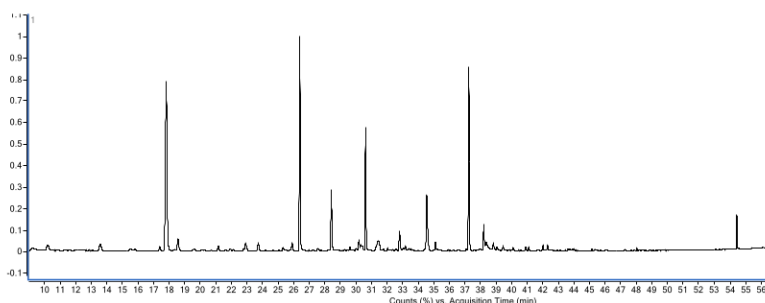


Figure 1. The chromatogram of the volatile compounds of honey

Table 2. The concentration of the volatile compounds of honey

	Compounds	Concentration ($\mu\text{g/kg}$)
1	Hexanol	156.920
2	1,5,7-Octatrien-3-ol, 3,7-dimethyl-	138.384
3	1-Heptanol	84.421
4	Linalool	63.504
5	Nonanal	54.526
6	Eicosyl octyl ether	23.775
7	Thymol	19.978
8	Decanal	18.249
9	Heptanal	15.455
10	Hexanal	10.918
11	1,3,5-Cycloheptatriene, 3,7,7-trimethyl-	10.575
12	Octanoic acid, ethyl ester	10.182

13	Octanal	8.530
14	Heptanoic acid, ethyl ester	7.991
15	Benzeneacetaldehyde	7.540
16	trans-Linalool oxide (furanoid)	6.849
17	Octyl chloroformate	6.444
18	Levomenthol	6.295
19	Hexanoic acid, ethyl ester	5.459
20	4-methoxy-phenyl-	4.717
21	1-Cyclohexene-1-carboxaldehyde, 4-(1-methylethyl)-	3.923
22	1-Nonanol	3.916
23	2-thiazole, 1,4-dimethyl-	3.432
24	4-(2-Fluorobenzylidene)-2-phenyl-1,3-oxazol-5(4H)-one	3.053
25	endo-Borneol	2.896
26	Dimethyl trisulfide	2.704
27	D-Limonene	2.690
28	2-Cyclohexen-1-one, 4-(1-methylethyl)-	2.667
29	L- α -Terpineol	2.659
30	Decanoic acid, ethyl ester	2.625
31	1-Hexanol, 4-methyl-, (S)-	2.493
32	3-Hexen-2-one	2.488

²⁶ The volatile compounds found in honey are characteristic markers of their botanical origin. Studies have shown that honeys have different volatile compounds depending on their species. Some monofloral honeys and their main marker compounds are summarized in Table 3 as a result of the studies.

Table 3. The marker volatile compound/s of different honeys

Honey type	Marker volatile compound/s	Reference
<i>L. bicolor</i> monofloral honey	Kaempferol-3- <i>O</i> -galactoside	Ren et al., 2022
Chesnut honey	Acetophenone, 1-phenylethanol, 2-aminoacetophenone	Pattamayutanon et al., 2017
Rhododendron honey	Lilac aldehyde, 2- ²³ inoacetophenone	Senyuva et al., 2009
Citrus honey	3-hydroxy-5-methyl-2-hexanone, methyl anthranilate	Castro-Vazquez et al., 2009
Leatherwood honey	⁴ Methoxymandelic acid	Moore et al., 2025
Thyme honey	2-phenylacetaldehyde, ethyl nonanoate, benzaldehyde, 2-phenylethanol ²⁴ -ol	Karabagias et al., 2018
Orange honey	Hotrienol (3,7-dimethyl- ⁴⁷ ,7octatrien-3-ol	Verzera et al., 2001
Chesnut honey	acetophenone, 2-aminoacetophenone, and 1-phenylethanol	Guyot et al., 1998
Strawberry tree honey	3,5,5-trimethyl-2-cyclohexen-1-one, 3,5,5-trimethyl-3-cyclohexen-1-one, 3,5,5-trimethyl-cyclohex-2-ene-1,4-dione	Bianchi et al., 2005

Acacia honey	⁴⁵ cis-linalool oxide, 3-methyl 3-buten-1-ol, heptanal	Machado et al., 2020
--------------	----------------------------------------------------------------------	----------------------

Conclusion

Honey is an animal product with high bioavailability. While there are many types of honey, interest in specific blossom honeys is quite high. Many properties of honey, such as its chemical composition, plant origin, antioxidant activity, phenolic compounds, and aroma compounds, can be determined through analyses. In this study, a honey sample provided by a beekeeper in Burdur province of Türkiye was examined. Authentic properties of the honey sample were determined by melissopalynological analysis. The honey sample, which contained two taxa, contained 95.90% Chenopodiaceae pollen and 4.10% Poaceae pollen. The honey was identified as 'Monofloral Chenopodiaceae Honey'. Analysis of the honey sample using the SPME method revealed 32 volatile compounds. The concentration of 1-Hexanol is the highest in monofloral Chenopodiaceae honey (156.920 $\mu\text{g/kg}$), which contains alcohol, aldehyde, ketone, ester and terpene compounds. This is followed by 1,5,7-Octatrien-3-ol, 3,7-dimethyl- (138.384 $\mu\text{g/kg}$), and 1-Heptanol (84.421 $\mu\text{g/kg}$). These three compounds are considered marker volatile compounds for monofloral Chenopodiaceae honey due to their high concentrations. The volatile compounds detected in the honey sample affect the taste, aroma, and bioactivity of honey. Considering factors such as geographical location, flora, and climatic conditions, it can be said that each honey has its own unique characteristics. In this regard, it would be useful to determine the content composition of different honeys and reveal their specific properties. In addition, research on their health effects should be conducted to ensure the effective use of monofloral honeys in apitherapy.

References

1. Bogdanov S, Jurendic T, Sieber R, Gallmann P. (2008). Honey for nutrition and health: A review. *J Am Coll Nutr.* 27(6): 67789.
2. Al-Mamary, M., Al-Meer, A., Al-Habori, M. (2002). Antioxidant activities and total phenolics of different types of honey. *Nutr. Res.* 22 (9), 1041-1047.
3. Alvarez-Suarez JM, Tulipani S, Romandini S, Bertoli E, Battino M. (2010). Contribution of honey in nutrition and human health: a review. *Mediterr. J. Nutr. Metab.* 3:15-23.
4. Molan, P.C., Cooper, R.A. (2000). Honey and sugar as a dressing for wounds and ulcers. *Trop. Doct.* 30 (4), 249-250.
5. Noori, A.L., Al Ghamdi, A., Ansari, M.J., Al-Attal, Y., Al-Mubarak, A., Salom, K. (2013). Differences in composition of honey samples and their impact on the antimicrobial activities against drug multiresistant bacteria and pathogenic fungi. *Arch. Med. Res.* 44 (4), 307-316.

6. Melliou, E., Chinou, I. (2011). Chemical constituents of selected 78 unifloral Greek honeys with antimicrobial activity. *Food Chemistry*, 129: 284-290.
7. Escriche, I., Sobrino-Gregorio, L., Conchado A., Juan-Borras M. (2017). Volatile profile in the accurate labelling of monofloral honey. The case of lavender and thyme honey. *Food Chemistry*, 226: 61-68.
8. Cuevas-Glory, L.F., Pino, J.A., Santiago, L.S., Sauri-Duch, E. (2007). A review of volatile analytical methods for determining the botanical origin of honey. *Food Chemistry*, 103, 1032-1043.
9. Rubatzky, V.E., Yamaguchi, M. (1997). Spinach, Table Beets, and Other Vegetable Chenopods. In: *World Vegetables*. Springer, Boston, MA., 457-473. <https://doi.org/10.1007/978-1-4615-6015-9-21>
10. Cherrada N., Ahmed El Khalifa Chems A., Gheraissa N, Zaater A., Benamor B., Ghania A., Yassine B., Kaddour A., Afzaal M., Asghar A., Saeed F., Teferi Asres D. (2024) Antidiabetic medicinal plants from the Chenopodiaceae family: a comprehensive overview, *International Journal of Food Properties*, 27:1, 194-213, DOI: 10.1080/10942912.2023.2301576
11. Alhassnwy S.H.H., Hasan Al-nomani R.M. (2021). Comparative chemical study for species of the family Poaceae. *Sys Rev Pharm.*, 12(1): 905-920.
12. Kayacier A., Karaman S. (2008). Rheological and some physicochemical characteristics of selected Turkish honeys. *J Texture Stud.* 39: 17-27.
13. TÜİK, 2025. <https://biruni.tuik.gov.tr/bolgeselistatistik/tabloOlustur.do> Accessed: 26.06.2025
14. Louveaux, J., Maurizio, A., Vorwohl, G. (1978). International Commission for Bee Botany of IUBS, *Methods of Melissopalynology*. *Bee World*, 59(4): 139-157.
15. Xagoraris M., Skouria A., Revelon P.K., Alissandrakis A., Tarantilis P.A., Pappas C.S. (2021). Response surface methodology to optimize the isolation of dominant volatile compounds from monofloral Greek thyme honey using SPME-GC-MS. *Molecules*, 26, 3612.
16. Can, Z., Yildiz, O., Sahin, H., Akyuz Turumtay, E., Silici, S., Kolaylı, S. (2015). An investigation of Turkish honeys: their physico-chemical properties, antioxidant capacities and phenolic profiles. *Food Chemistry*, 180, 133e141. <http://dx.doi.org/10.1016/j.foodchem.2015.02.024>.
17. Bolukbaşı, D. N. (2009). Melissopalynologic analysis of packed honey. *Mellifera*, 9(18), 2-8.
18. Taşkın D., İnce A. (2009). Pollen analysis of Burdur region honeys. *SDU J. Nat. Appl. Sci.* 13(1): 10-19.
19. Cianciosi D., Forbes-Hernández T.Y., Afrin, S., Gasparrini M., Reboredo-Rodríguez P., Manna, P.P., Zhang, J., Lamas, L.B., Martínez Flórez, S., Toyos, P.A., Quiles, J.L., Giampieri, F., Maurizio Battino, M. (2018). Phenolic compounds in honey and their associated health benefits: A review. *Molecules*, 23: 2322.
20. Castro-Vázquez, L., Díaz-Maroto, M. C., Gonzalez-Viñas, M. A., & Pérez-Coello, M. S. (2009). Differentiation of monofloral citrus, rosemary, eucalyptus, lavender, thyme and heather honeys based on volatile composition and sensory descriptive analysis. *Food Chemistry*, 112, 1022-1030.
21. Song J., Shao Y., Yan Y., Li X., Peng J. Guo L. (2021). Characterization of volatile profiles of three colored quinoas based on GC-IMS and PCA. *LWT- Food Sci. Technol.*, 146: 111292.

22. Ren C., Wang K., Luo T., Xue X., Wang M., Wu L., Zhao L. (2022). Kaempferol-3-O-galactoside as a marker for authenticating *Lespedeza bicolor* Turcz. monofloral honey. *Food Res. Int.*, 160:111667.
23. Pattamayutanon P., Angeli S., Thakeow P., Abraham J., Disayathanoowat T., Chantawannakul P. (2017). Volatile organic compounds of Thai honeys produced from several floral sources by different honey bee species. *PLoS ONE* 12:e0172099
24. Senyuva H.Z., Gilbert J., Silici S., Charlton A., Dal C., Gurel N et al. (2009). Profiling Turkish honeys to determine authenticity using physical and chemical characteristics. *J. Agric. Food Chem.* 57:3911-3919.
25. Moore G., Brooks P., Boufridi A. (2025). 4-Methoxymandelic acid: A leatherwood (*Eucryphia lucida*) honey marker for authentication. *Current Research in Food Science*, 10: 101088.
26. Karabagias, I.K. (2018). Volatile metabolites or pollen characteristics as regional markers of monofloral thyme honey? *Sep. Sci. Plus.* 1, 83-92.
27. Verzera A., Campisi S., Zappala M., Bonaccorsi I. (2001). SPME-GC-MS analysis of honey volatile components for the characterization of different floral origin. *American Laboratory*, 18-21.
28. Guyot C., Bouseta A., Scheirman V., Collin S. (1998). Floral origin markers of chestnut and lime tree honeys. *J Agric. Food Chem.* 46: 625-633.
29. Bianchi, F.; Careri, M.; Musci, M. (2005). Volatile norisoprenoids as markers of botanical origin of Sardinian strawberry-tree (*Arbutus unedo* L.) honey: Characterisation of aroma compounds by dynamic headspace extraction and gas chromatography-mass spectrometry. *Food Chem.* 89, 527-532.
30. Machado, A.M., Miguel, M.G., Vilas-Boas, M., Figueiredo, A. C. (2020) Honey volatiles as a fingerprint for botanical origin-a review on their occurrence on monofloral honeys. *Molecules*, 25, 374.

DETERMINATION OF CHARACTERISTIC VOLATILE COMPOUNDS OF MONOFLORAL CHENOPODIACEAE HONEY BY SPME-GC-MS

ORIGINALITY REPORT

29%

SIMILARITY INDEX

23%

INTERNET SOURCES

26%

PUBLICATIONS

6%

STUDENT PAPERS

PRIMARY SOURCES

1	www.bio-conferences.org Internet Source	4%
2	www.researchgate.net Internet Source	2%
3	www.mdpi.com Internet Source	1%
4	uludag.edu.tr Internet Source	1%
5	Esra Demir, Turan Yuksek, Vagif Atamov, Ali Erdem Ozcelik. "A Comparison Of The Physicochemical Properties Of Chestnut And Highland Honey: The Case Of Senoz Valley In The Rize Province Of Turkey", Food Chemistry, 2020 Publication	1%
6	worldwidescience.org Internet Source	1%
7	www.omicsonline.org Internet Source	1%
8	www.thegoodscentscompany.com Internet Source	1%
9	Submitted to Central University of Himachal Pradesh, Dharamshala Student Paper	1%

refp.cohlife.org

10	Internet Source	1 %
11	ebin.pub Internet Source	1 %
12	Igor Jerković, Saša Prđun, Zvonimir Marijanović, Marina Zekić, Dragan Bubalo, Lidija Svečnjak, Carlo Tuberoso. "Traceability of Satsuma Mandarin (Citrus unshiu Marc.) Honey through Nectar/Honey-Sac/Honey Pathways of the Headspace, Volatiles, and Semi-Volatiles: Chemical Markers", Molecules, 2016 Publication	1 %
13	mdpi-res.com Internet Source	1 %
14	rrpharmacology.ru Internet Source	1 %
15	Kaskoniene, V.. "Composition of volatile compounds of honey of various floral origin and beebread collected in Lithuania", Food Chemistry, 20081215 Publication	1 %
16	Aslı Özkök, Hayriye Akel Bilgiç, Can Kosukcu, Gökhan Arık, Deniz Canlı, İdil Yet, Cagatay Karaaslan. "Comparing the melissopalynological and next generation sequencing (NGS) methods for the determining of botanical origin of honey", Food Control, 2023 Publication	1 %
17	Eman H. Al Kiyumi, Balqees S. Al Rashdi, Aya R. Al Alawi, Asma A. Al Balushi et al. "Quantification of bioactive components and evaluation of antioxidative potential of	1 %

different floral origin honey from arid regions of Oman", Biocatalysis and Agricultural Biotechnology, 2021

Publication

18	bdtd.biblioteca.ufpb.br	1 %
----	-----------------------------------------------------------------------	-----

Internet Source

19	dictall.com	1 %
----	-----------------------------------------------	-----

Internet Source

20	Baiome Abdelmaguid Baiome, Xianfeng Ye, Zhongyuan Yuan, Yahya Z. A. Gaafar, Sherif Melak, Hui Cao. "Identification of Volatile Organic Compounds Produced by <i>Xenorhabdus indica</i> Strain AB and Investigation of Their Antifungal Activities", Applied and Environmental Microbiology, 2022	<1 %
----	--------------------------------------------------------------------------------------------------------------------------------------------------------------------------------------------------------------------------------------------------------------------------------------------------	------

Publication

21	Tahir, Haroon Elrasheid, Zou Xiaobo, Li Zhihua, and Zhu Yaodi. "Comprehensive Evaluation of Antioxidant Properties and Volatile Compounds of Sudanese Honeys : Antioxidant Properties and Volatile Compounds of Honey", Journal of Food Biochemistry, 2015.	<1 %
----	-------------------------------------------------------------------------------------------------------------------------------------------------------------------------------------------------------------------------------------------------------------	------

Publication

22	epdf.pub	<1 %
----	-----------------------------------------	------

Internet Source

23	Otilia Bobis, Adela Ramona Moise, Isabel Ballesteros, Estefanía Sánchez Reyes et al. "Eucalyptus honey: quality parameters, chemical composition and health-promoting properties", Food Chemistry, 2020	<1 %
----	---------------------------------------------------------------------------------------------------------------------------------------------------------------------------------------------------------	------

Publication

24	Internet Source	<1 %
25	doras.dcu.ie Internet Source	<1 %
26	pericles.pericles-prod.literatumonline.com Internet Source	<1 %
27	riunet.upv.es Internet Source	<1 %
28	www.scielo.br Internet Source	<1 %
29	www2.mdpi.com Internet Source	<1 %
30	Min Zhu, Jing Sun, Haoan Zhao, Fanhua Wu, Xiaofeng Xue, Liming Wu, Wei Cao. "Volatile compounds of five types of unifloral honey in Northwest China: Correlation with aroma and floral origin based on HS-SPME/GC-MS combined with chemometrics", Food Chemistry, 2022 Publication	<1 %
31	Xun Jiao, Jia Cheng, Jun Yao, Miao Wang, Juan Du, Jing Wang, Yongxin She, A.M.ABD EL-ATY. "Characteristic Aroma Compounds and Relative Activity Values of Five Monofloral Honeys Analyzed Using HS-SPME/GC×GC-TOFMS and Chemometric Methods", Journal of Food Composition and Analysis, 2025 Publication	<1 %
32	ummto.dz Internet Source	<1 %
33	www.science.gov Internet Source	<1 %

34 Jose Miguel Alvarez-Suarez. "Contribution of honey in nutrition and human health: a review", Mediterranean Journal of Nutrition and Metabolism, 07/08/2009 <1 %
Publication

35 Luiza D'oliveira Sant'ana, Aurelio Baird Buarque Ferreira, Maria Cristina Affonso Lorenzon, Ricardo Luis Louro Berbara et al. "Correlation of Total Phenolic and Flavonoid Contents of Brazilian Honeys with Colour and Antioxidant Capacity", International Journal of Food Properties, 2013 <1 %
Publication

36 Mehmet E. Duru, Meltem Taş, Fatih Çayan, Selçuk Küçükaydın, Gülsen Tel-Çayan. "Characterization of volatile compounds of Turkish pine honeys from different regions and classification with chemometric studies", European Food Research and Technology, 2021 <1 %
Publication

37 Upadhyay, Debasis, and Subir Bera. "Pollen Spectra of Natural Honey Samples from a Coastal District of Orissa, India", Journal of Apicultural Research, 2012. <1 %
Publication

38 dergipark.org.tr <1 %
Internet Source

39 link.springer.com <1 %
Internet Source

40 m.lookchem.com <1 %
Internet Source

41 revfitotecnica.mx <1 %
Internet Source

42	ruja.ujaen.es Internet Source	<1 %
43	www.scribd.com Internet Source	<1 %
44	Ahmad A. Al-Ghamdi, Mohammad Javed Ansari. "Biological and therapeutic roles of Saudi Arabian honey: A comparative review", Journal of King Saud University - Science, 2021 Publication	<1 %
45	hdl.handle.net Internet Source	<1 %
46	"Honey", Wiley, 2023 Publication	<1 %
47	A. Verzera, C. Condurso. "Sampling Techniques for the Determination of the Volatile Fraction of Honey", Elsevier BV, 2012 Publication	<1 %
48	Elisabetta Bonometti, Alessia Giordana, Lorenza Operti, Roberto Rabezzana, Francesca Turco, Giorgio Volpi. "Characterization of unifloral Italian (Piedmont region) honeys by headspace solid phase microextraction coupled to gas chromatography-mass spectrometry", JSFA reports, 2022 Publication	<1 %
49	Hiroyuki Iguchi, Akihisa Watanabe. "Honey flavors formed via yeast fermentation in honey from Japanese honeybees", Bioscience, Biotechnology, and Biochemistry, 2025 Publication	<1 %

Exclude quotes	On	Exclude matches	Off
Exclude bibliography	On		