



ISSN NO. 2320-5407

Journal homepage: <http://www.journalijar.com>

INTERNATIONAL JOURNAL
OF ADVANCED RESEARCH

RESEARCH ARTICLE**AN UNUSUAL PRESENTATION OF UPPER FIBULAR OSTEOCHONDROMA IN A YOUNG GIRL**

**DR MAHENDRA GUPTA ,PROF. DR JAGDISH PATWA , DR MALKESH SHAH , DR ADITYA
AGRAWAL , DR DHRUVEN KOSADA , DR ADITYA MERH**

Sumandeep vidhyapeeth deemed university, dhiraj general hospital, sbks medical college.

Manuscript Info**Abstract****Manuscript History:**

Received: 14 November 2015
Final Accepted: 20 December 2015
Published Online: January 2016

Key words:***Corresponding Author**

DR MAHENDRA
GUPTA.

Copy Right, IJAR, 2016.. All rights reserved.

Introduction:-

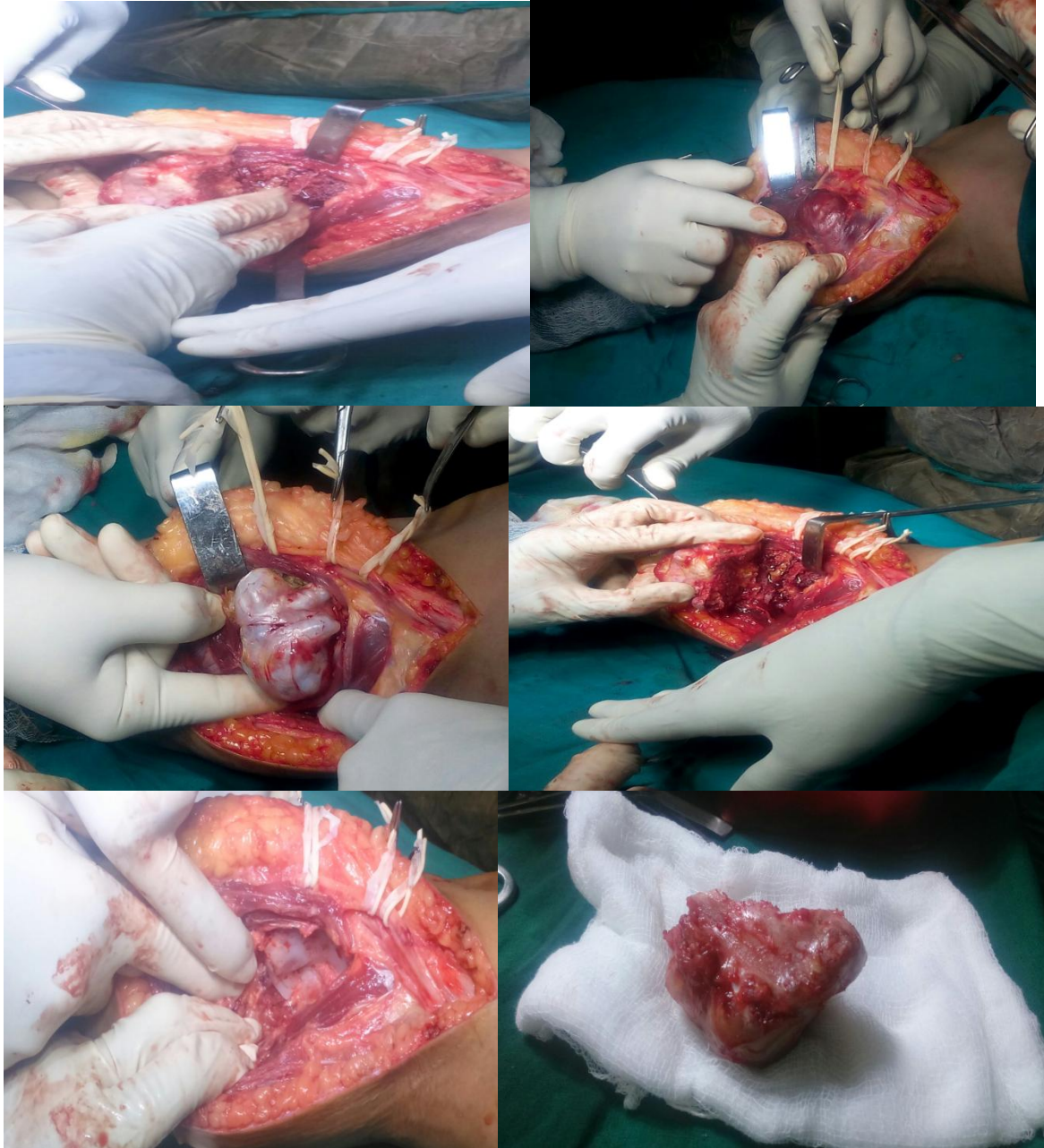
An Osteochondroma Or Exostosis Is Benign Bone Tumour Consisting Of An Bony Outgrowth Covered By A Cartilage Cap. It Commonly Occurs In The Metaphysis Of Long Bones, Mainly The Distal Femur, Proximal Tibia And Proximal Humerus. At Times Growth Occurs Within The Bone Instead Of Outburst Known As Enchondromata.

We describe an unusual case of posterolateral swelling in the left leg of a 17 years old young female.

Pre – Op Xray : Shows Proximal Fibula Osteochondroma

**Steps Of Surgery:-**

Intraop, We Made Posterolateral Incision And Found The Tumour Almost Totally Involving The Fibular Head And Compressing The Lateral Popliteal Nerve. Lateral Popliteal Nerve Was Dissected Proximally From The Normal Area And The Tumour Was Excised .Lateral Popliteal Nerve Was Found To Be Flattened However The Patient Has No Neurological Deficit .



Post Op : Fortunately, The Girl Had Normal Neurology And Full Ankle Movements Both Pre And Postoperatively. The Patient Was Allowed Full Weight Bearing Walking With No Plaster Application Required.
Post-Op Xray:



Post Op Clinical



Conclusion:-

Although Most Osteochondromas In Children Are To Be Treated Conservatively This Benign Tumour Was Treated With Surgical Excision As The Young Girl Had Psychological And Social Issues Related To Her Cosmetically Deformed Appearance Along With Compression Over Lateral Popliteal Nerve.

Pt Is Fully Mobile With Full Weight Bearing And Having Full Range Of Movements At Knee and Ankle Joint .Being A Girl Her Psychological And Social Problem Was Over After Removal.