



Journal Homepage: - www.journalijar.com

INTERNATIONAL JOURNAL OF ADVANCED RESEARCH (IJAR)

Article DOI: 10.21474/IJAR01/17026

DOI URL: <http://dx.doi.org/10.21474/IJAR01/17026>



RESEARCH ARTICLE

A STUDY TO ASSESS THE LEVEL OF SIGNIFICANCE OF COMPASSION FOR STAFF NURSES AT SMVMCH PUDUCHERRY

Ms. Ramya R.¹, Mrs. K. Manohari² and Prof. Dr. G. Muthamilselvi³

1. M.Sc., (Nursing)-I year Sri ManakulaVinayagar Nursing College.
2. Reader in nursing, Sri ManakulaVinayagar Nursing College.
3. Principal, Sri ManakulaVinayagar Nursing College.

Manuscript Info

Manuscript History

Received: 25 March 2023

Final Accepted: 30 April 2023

Published: May 2023

Abstract

Compassion is one of the key concepts of being a nurse. It is defined as asympathetic consciousness of others' distress, together with a desire to alleviate it. Nurses who are compassionate are however exposed to the risk of developing compassion fatigue, which has been linked to poor quality of care among nurses, increased staff turnover rate, decreased productivity, and low quality of life, all of which led to a negative impact on patient's safety and satisfaction, as well as on the nurses themselves.

Copy Right, IJAR, 2023.. All rights reserved.

Introduction:-

Compassion is a virtue and a necessary trait of nursing and being a nurse. It is a feeling evoked by witnessing others pain that leads to taking measures to help them. Compassion is the human and moral part of care, and according to many nursing literatures, compassion is the philosophical foundation and centerpiece of the nursing profession. Being compassionately responsive to the care needs of patients is one of the professional standards of nursing.

Compassion may have a direct effect on the quality of cares provided to patients so that they normally evaluate the quality of services based on the compassion demonstrated by the nurse. Providing compassionate nursing care can lead to higher satisfaction in patients, safer cares, saving time and cost, a sense of satisfaction and effectiveness in the personnel, higher confidence, and coping skills in them. However, modern nursing is mostly based on quantitative evidence and technical skills, and there is a little attention toward morality and compassion. Thereby, attributes and behaviors that might be construed by patients as compassion in nurses and medical staff are not recognized, so that there are several different definitions of compassionate nursing care.

Papadopoulos defined recognizing the patient's need and demonstration of attention an understanding of patients' needs as the signs of compassion. Van der Cingel argued that compassionate nursing care is featured with paying attention, listening, dealing with patient's problems, cooperating and accompanying the patient, helping, being available, and understanding. Compassionate nursing care from the patient's point of view is featured with being considerate and accurate in dealing with patient's problems, being committed to realize and work to sooth the patient's pain while keeping a respectful relationship with the patient.

Statement Of The Problem:

“A Study to Assess the Level Of Significance of Compassion for Staff Nurses at SMVMCH Puducherry.”

Corresponding Author:- Ms. Ramya R.

Address:- M.Sc., (Nursing)-I year Sri ManakulaVinayagar Nursing College.

Objectives:-

1. To assess the level of significance of compassion among staff nurses
2. To associate the level of significance of compassion among staff nurse in selected demographic variables.

It deals with research approach, research design, setting of the study, population, criteria for sample selection, sample size, sample technique development and description of the tool for data collection, procedure for data collection and statistical analysis.

Sample of the study of level of compassion of all staff nurses at selected center, Puducherry, sample size consists of 30 staff nurses who fulfilled inclusion criteria. Purposive sampling technique was adopted for this present study.

Section A:

This section consists of socio-demographic variable consists of Age in years, Gender, Education of qualification, Family monthly income, Place of living, Type of working areas, House of work, Number of children's, Religion, Type of the family, Marital status

Section B :

This section consist of compassion scale with 24 items. The questions on kindness, common humanity and mindfulness is normally scored with the maximum of 5 and minimum of 1. Whereas the indifference, separation and disengagement is reversely scored.

Score Interpretation:

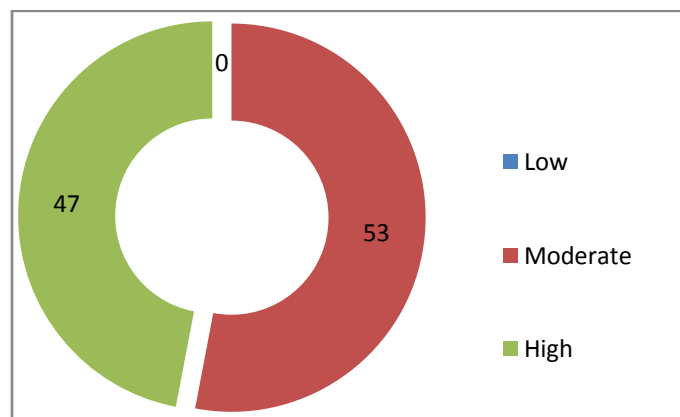
1-40	Low level of compassion
41-80	Moderate level of compassion
81-120	High level of compassion

Table 3:- Mean and standard deviation regarding level of significance of compassion among staff nurses at SMVMCH Puducherry.

MEAN	STANDARD DEVIATION
81.7	10.59

Table 3 reveals that mean and standard deviation of level of significance of compassion among staff nurses with the mean value of 81.7 and standard deviation of 10.59.

LEVEL OF COMPASSION	FREQUENCY	PERCENTAGE
Low	0	0
Moderate	16	53
High	14	47



Results:-

The level of significance of compassion among staff nurse. Majority of them had some time compassion 16 (53%) and high 14 (47%).

Discussion:-

The goal of study was evaluate A study to assess the significance of level of compassion for staff nurses at SMVMCH, Puducherry.

This chapter discuss the main finding of research study and review that in relation to the finding from the result of the present study identify the significant of level of compassion for staff nurses.

The total sample collected were 30, an descriptive study to identify the significance of level of compassion for staff nurses, the demographic variable such age, sex, education, occupation, marital status, and religion, family income and type of family.

Table 4: Association with level of significance of compassion among staff nurses with their selected demographic variables. [N=30]

S.No	DEMOGRAPHIC VARIABLES	Moderate		High		X ²
		N	%	N	%	
01	Age in years					
	A. 20-25 years	7	23	5	17	1.283 Df=3 0.733
	B. 26-30 years	6	20	7	23	
	C. 31-35 years	2	7	2	7	
	D. 36-40 years	1	3	0	0	
02	Gender					0.033
	A. Male	3	10	3	10	Df=1 0.855
	B. Female	13	43	11	37	
03	Education of qualification					
	A. Diploma nursing	3	10	1	3	3.047 Df=2 0.218
	B. Degree in nursing	11	37	13	43	
	C. Post basic nursing	2	7	0	0	
	D. Master in nursing	0	0	0	0	
04	Family monthly income					
	A. Below Rs. 10000	1	3	0	0	4.038 Df=3 0.257
	B. Rs. 10001-15000	6	20	7	23	
	C. Rs. 15001-20000	6	20	7	23	
	D. More than 20,000	3	10	0	0	
05	Place of living					0.049
	A. Urban	4	13	4	13	Df=1 0.825
	B. Rural	12	40	10	33	
06	Type of working areas					
	A. General ward	15	50	13	43	0.010 Df=1 0.922
	B. Critical care unit	1	3	1	3	
	C. Special ward	0	0	0	0	
07	Hours of work					
	A. 6 hours	12	40	8	27	1.071 Df=1 0.301
	B. 8 hours	4	13	6	20	
08	Number of children's					
	A. 0	12	40	7	23	2.479 Df=2 0.290
	B. 1	2	7	2	7	
	C. 2	2	7	5	17	
	D. More than 3	0	0	0	0	
09	Religion					
	A. Hindu	16	53	13	43	1.182 Df=1 0.277
	B. Christian	0	0	0	0	
	C. Muslim	0	0	1	3	
	D. Other	0	0	0	0	

10	Type of the family					4.739
	A. Nuclear family	13	43	6	20	Df=1
	B. Joint family	3	10	8	27	0.029*
11	Marital status					
	A. Single	11	37	4	13	4.821
	B. Married	5	17	10	33	Df=1
	C. Divorce	0	0	0	0	0.028*
	D. Widow	0	0	0	0	

Conclusion:-

This implies that on the content of study investigator have assessed the level of significance of compassion among staff nurses. it is concluded that the compassion level for staff nurses are high and some time at the equal level. So it is recommended to plan some intervention technique to improve their compassion level for staff nurses.

Reference:-

1. Mary. C. Townsend, "psychiatric mental health nursing concept of care and evidence-based practice", 8th edition, F.A Davis Company publication.
2. R. Sreevani, "A guide to mental health and psychiatric nursing" 3rd edition, Jaypee publication.
3. Goldsmith TC. Evolution of aging theories: why modern programmed aging concepts are transforming medical research, *biochemistry (Mosc)*.2016 DEC; 81 (12).
4. Dr. Bimla Kapoor, "Textbook of psychiatric nursing" volume – II, 5th edition, Jaypee publication 2019.

Journal Reference

1. Hem Sagar Rimal et.al "journal of Kathmandu medical college", Study on Corporal punishment and its effects in children, March 2014.
2. Saeeda Iqbal Akhtar et.al "The impact of corporal punishment on student's performance in public schools", July 2018.
3. Deb, Sibnath, Kumar et.al "corporal punishment", *School Psychology international*, Volume: 38, p 60-77, Feb: 2017.
4. Allison Stevens et.al Honors Theses, Western Michigan University, "Positive Discipline as a Part of effective classroom Management", April.27.2018.