



ISSN (O): 2320-5407
ISSN (P): 3107-4928

Journal Homepage: [-www.journalijar.com](http://www.journalijar.com)

INTERNATIONAL JOURNAL OF ADVANCED RESEARCH (IJAR)

Article DOI: 10.21474/IJAR01/23229
DOI URL: <http://dx.doi.org/10.21474/IJAR01/23229>



INTERNATIONAL JOURNAL OF
ADVANCED RESEARCH (IJAR)
ISSN 2320-5407
Journal Homepage: <http://www.journalijar.com>
Journal DOI: 10.21474/IJAR01

RESEARCH ARTICLE

USE OF ZOOPLANKTON TO DIAGNOSE THE ECOLOGICAL QUALITY OF THE WATERS OF THE BANCO RIVER (SOUTH-EAST OF IVORY COAST)

N'guessan Adjoua Marthe and Seu-Anoi Netto Mireille

1. Laboratory of Environment and Aquatic Biology (LEBA), UFR - Environmental Sciences and Management, Nangui ABROGOUA University, Abidjan, Ivory Coast.

Manuscript Info

Manuscript History

Received: 8 February 2026

Final Accepted: 10 March 2026

Published: April 2026

Key words:-

Zooplankton, Banco River,
WaterQuality, Eutrophication,
CoteD'Ivoire

Abstract

The aim of this study was to evaluate the ecological quality of the Banco River water through the zooplankton community. Sampling took place monthly from July 2020 to June 2021 at four defined points on the Banco River. The diversity of releases led to the selection of these sampling stations. The analysis of environmental parameters was conducted in accordance with ISO standards. A 20 μ m void plankton net was used to collect the zooplankton. A total of 49 zooplankton species were recorded, including 36 rotifers, 8 cladocerans, and 5 copepods. Rotifers represented the most abundant group, accounting for 73.46% of the total abundance. Station B1 had the highest taxonomic richness with 46 taxa. Stations B2 and B3 were virtually identical, each with 42 taxa. Station B4 recorded the lowest taxonomic richness with 34 taxa. The Cladoceros/Rotifer index showed that station B4 is the least disturbed by human activities, while stations B1, B2, and B3 are heavily disturbed. Based on these results, water pollution control measures are a priority for the long-term protection of this aquatic ecosystem.

"© 2026 by the Author(s). Published by IJAR under CC BY 4.0. Unrestricted use allowed with credit to the author."

Introduction:-

Rapid urbanization and industrialization in cities lead to a large production of solid and liquid waste. Domestic and industrial waste is discharged into aquatic ecosystems without prior treatment (Houngpè et al., 2017) in most developing countries. The influx of effluents into aquatic environments exerts considerable pressure on these ecosystems. This pressure results in a degradation of water quality and the habitats upon which aquatic life depends. According to Owa (2013), these activities thus alter the composition of biological communities present in waterways, generally by reducing the biological diversity of the aquatic ecosystem. For decades, zooplankton has constituted an important energy resource in aquatic environments for fish and other organisms at higher trophic levels (Aka et al., 2010). Furthermore, zooplankton organisms are also a good indicator of water quality in the global context of eutrophication of aquatic environments attributable to rapid urbanization and industrialization on the one hand, and the use of pesticides in agro-industrial operations on the other (Brito et al., 2011). Zooplankton therefore plays an important role in the functioning of aquatic ecosystems. Indeed, knowledge of the distribution and

Corresponding Author:-N'guessan Adjoua Marthe

Address:-Laboratory of Environment and Aquatic Biology (LEBA), UFR - Environmental Sciences and Management, Nangui ABROGOUA University, Abidjan, Ivory Coast.

structure of zooplankton communities is important not only for monitoring the quality of watercourses but also for understanding energy transfer in aquatic ecosystems.

In Côte d'Ivoire, several studies on zooplankton have been carried out. These studies were conducted in various basins and watercourses, namely the agro-pastoral reservoirs in the Korhogo, Ferkessédougou and Ouangolo areas (Aka et al., 2000), the Bia and Agnéby rivers (Ouattara et al., 2007), the Comoé river basin (Yao et al., 2015), the Bagoé river (N'da et al., 2015), the Ehania, Boulo 1 and 2 and Bodoua coastal rivers (Monney, 2017), the Hana River in Tai National Park (Diomandé et al., 2018) etc. However, our knowledge remains limited, as none of these previous studies conducted in Côte d'Ivoire have highlighted the dynamics of the zooplankton community in the Banco River. It is therefore important to inventory the zooplankton species in order to characterize the structure of their assemblage in such a context of high anthropogenic pressure, in order to assess the ecological status of this river. The objective of this study is to evaluate the water quality of the Banco River, located in the heart of Banco National Park, in the center of Abidjan.

Methodology:-

Description of sampling stations:

The Banco River is a waterway covering a basin of 56 km² (Mangoua et al., 2009). This river originates at the foot of a plateau on the northern edge of the park, flows for 9 km before emptying south into the Ebrié Lagoon at Banco Bay (Lauginie, 2007). Low water levels caused by dry periods are almost nonexistent in this watercourse. Its flow rate always exceeds 1.35 m³/s, and significant flooding is frequently observed during the main rainy season (Kouamé, 2009). The Park is located between 5°21' and 5°25' N, and 4°01' and 4°05' W in southern Côte d'Ivoire, specifically in the city of Abidjan. Its catchment area covers 3,474 hectares. The park is bordered to the northeast by the municipality of Abobo, to the southeast by the municipality of Adjamé, and to the west by the municipality of Yopougon. Taking into account accessibility, the upstream-downstream gradient, and the influence of human activities, four (4) sampling stations were selected (Fig 1).

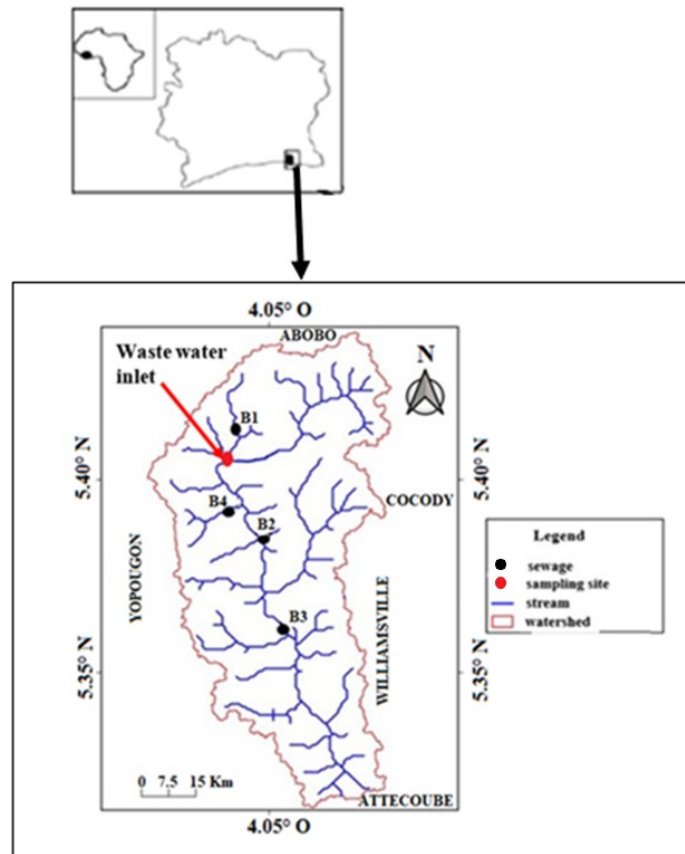


Fig 1: Location of the different sampling stations on the Banco River (B1 to B4)

Analysis of physicochemical parameters:-

Environmental parameters such as chemical oxygen demand (COD) and biochemical oxygen demand (BOD5) were determined using APHA:1905 and AFNOR:1926 methods (Buhungu et al., 2018). Ammonium, nitrate, nitrite, and total phosphorus concentrations were assessed photometrically using the Palin Test DR 7500 photometer with pre-dosed reagents.

Sampling, observation and identification of the zooplankton population:-

The sampling strategy adopted in this study aimed to cover all climatic seasons in the Abidjan district. Eleven sampling campaigns were conducted between July 2020 and June 2021, from 9:00 AM to 2:00 PM, excluding October. Four 10-liter buckets (for a total volume of 40 liters) were collected from the upstream environment and filtered through a 20 µm mesh plankton net. The resulting concentrate was collected in a 120 ml vial. Organisms were stained with Lugol's iodine and then fixed with 5% formaldehyde. In the laboratory, taxa were observed under a CARL ZEISS optical microscope (40x, 60x, and 100x objectives). Taxon identification was performed using various keys according to the different zooplankton groups. Thus, for Rotifers, the keys of Pontin (1978), Voigt & Koste (1978) and Pourriot (1980) were used. The keys of Rey & Saint-Jean (1980), Idris (1983) and Korinèk (1999) were used for the identification of Cladocera, while Copepods were identified using the key of Dussart (1980).

Data analysis:-

The structure index, like the Shannon and Weaver species diversity index (H), was calculated using the Sanaa formula (2006) to determine the structure of the zooplankton community. The Cladoceran/Rotiferan (C/R) index (proposed by Viroux, 2002; Bouazzara et al., 2022; Bansode & Pawar, 2023; and Gavrilko et al., 2024) was used to assess the ecological status of the Banco River. This index is used in ecology to assess the trophic status of aquatic environments (El Batoul et al., 2023).

The Cladoceran/Rotiferan (C/R) ratio is calculated using the following formula:

With N_C : Total number of Cladocerans observed

N_R : Total number of Rotifers observed

Zooplankton density (D), or the number of organisms per unit volume, was calculated using the formula used by

Agadjihouede et al. (2010):

$$D = \frac{n}{v_1} \times \frac{v_2}{v_3}$$

With n = number of individuals counted,

v_1 = volume of the filtrate taken (50 mL),

v_2 = volume of concentrated filtrate (100 mL),

v_3 = volume of filtered water (10 L).

The key of Dajoz (2000) was used to classify the species: constant species ($FO \geq 50\%$), accessory species ($25\% < FO < 50\%$) and accidental species ($FO \leq 25\%$). Kruskal -Wallis and Mann-Whitney tests were used to assess the significance of the variations in the different parameters. These tests were chosen after verifying the normality tests by the test of Shapiro normality. The KruskalWallis test was used to test the significance of the variation in parameters between different sampling stations and between different seasons. The significance of the results was assessed using the probability value p . When $p < 0.05$, the parameter being studied does not show significant variation. If $p < 0.05$, there is a significant difference, and the analysis continues with the Mann-Whitney test to determine the extent of this difference. The CANOCO program was used to establish the correlation between the distribution of taxa and the physicochemical parameters measured in each sampling site through a redundancy analysis (RDA). These tests were performed using R software version 3.5.2.

Results:-**Physical and chemical characteristics:-**

Table 1 presents the spatial and seasonal variation of the physical and chemical parameters of the water measured in situ in the Banco River. Recorded temperature values fluctuated from 24.93°C to 27.37°C at station B4 during the

main rainy season (MRS) and at station B1 during the main dry season (MSS), respectively. Statistical analysis revealed no significant difference between the seasons and stations (Kruskal-Wallis test, $p > 0.05$). High (13.29 mg/L) and low (2.17 mg/L) dissolved oxygen values were observed at stations B1 and B4, respectively, during the short rainy season (SRS). Dissolved oxygen in the Banco River showed significant variations between seasons and between stations (Mann-Whitney test; $p < 0.05$). Minimum turbidity values (9.29 NTU) were observed at station B4 during the major rainy season (GSP), while maximum values (243.5 NTU) were recorded at station B1, also during the minor rainy season. These turbidity values show significant variations from one season to another and from one station to another (Mann-Whitney test; $p < 0.05$). Nitrate levels in the Banco River waters ranged from 6.40 to 13.88 mg/l at stations B4 and B1 respectively during the main rainy season (GSP). COD levels varied from 4.03 mgO₂ / L to 27.21 mgO₂ / L. The highest value was recorded at station B3 during the short rainy season (SRS), while the lowest value was recorded at station B1 during the long dry season (LDS). Regarding BOD₅ values, they ranged from 2.05 mgO₂ / L to 7.75 mgO₂ / L. The lowest values were recorded at station B4 during the long dry season (LDS), while the highest value was obtained at station B3 during the short rainy season (LDS).

Table

Table 1: Spatial and seasonal variations of the physical and chemical parameters of the Banco River waters. B1-B4: Sampling stations; T: temperature; O₂: Dissolved Oxygen; Turb: turbidity; BOD₅: 5-day Biochemical Oxygen Demand; COD: Chemical Oxygen Demand; GSS: major dry season; GSP: major rainy season; PSS: minor dry season; PSP: minor rainy season;

Stations	Seasons	T (°C)	O ₂ (mg/L)	Turb (NTU)	Nitra (mg/L)	BOD ₅ (mgO ₂ /L)	DCO (mgO ₂ /L)
B1	GSS	27.37	3.34	48.40	5.35	2.65	5.11
	GPS	26.40	3.69	154.10	13.88	5.22	10.98
	PSS	25.74	7.06	50.60	8.80	3.70	5.55
	PSP	26.63	13.29	243.50	6.25	2.55	4.03
B2	GSS	25.27	3.49	65.15	7.10	3.00	9.30
	GPS	25.98	4.26	63.29	10.84	4.10	10.32
	PSS	25.95	6.18	48.20	8.95	6.90	10.65
	PSP	25.39	2.56	103.25	10.40	5.00	11.94
B3	GSS	25.68	3.14	62.15	14.10	4.75	15.15
	GPS	25.69	3.64	40.32	10.22	4.54	12.26
	PSS	25.81	7.46	41.20	16.30	7.65	8.95
	PSP	25.58	2.58	84.65	12.35	7.75	27.21
B4	GSS	26.14	3.64	12.00	7.90	2.05	5.66
	GPS	24.93	4.00	9.29	6.40	4.06	10.40
	PSS	25.53	5.11	10.99	6.90	3.95	8.80
	PSP	25.80	2.17	13.57	7.25	3.95	6.99

Qualitative analysis of the zooplankton population:-

A total of 49 zooplankton taxa were recorded at the four stations along the Banco River. This community comprises 36 rotifers, 8 cladocerans, and 5 copepods, belonging to 18 families and 21 genera (Table II). Rotifers, with 36 taxa (73.46%), are the most diverse group in the community, followed by cladocerans with 8 taxa (16.32%) and copepods with 5 taxa (10.20%). The rotifer group is the most diverse in this study, containing 10 families, including Asplanchnidae, Brachionidae, Euchlanidae, Hydrachnidae, Gastropodidae, Lecanidae, Lepadellidae, Synchaetidae, Trichocercidae, and Trochosphaeridae. Among these families are the Brachionidae families with 10 taxa (*Brachionus bidentatus*, *Brachionus patulus*, *Brachionus quadridentatus*, *Keratella cochlearis*, *Keratella lenzi*, *Notholca labis*, *Notholca sp.1*, *Notholca sp.2*, *Notholca sp.3*, *Notholca sp.4*) are the most diverse. Cladocerans are represented by four (4) families, including the Chydoridae, Daphniidae, Moinidae, and Sididae families. Among these families, the Daphniidae are the most diverse with 3 taxa (*Simocephalus punctatus*, *Simocephalus serrulatus*, *Simocephalus sp.*). As for the Copepod group, it consists of two families: Cyclopidae and Diaptomidae. Station B4 has the lowest taxonomic richness with 34 taxa, while station B1 has the highest with 46 taxa. Stations B2 and B3 have the same number of taxa, with 42 each.

Table I: List of zooplankton taxa collected at the different sampling stations of the Banco River; Acro: Acronyms. B1-B4 = sampling stations; * = rare taxa; ** = occasional taxa; * = common taxa.**

Zooplankton taxa	Acronyms	Stations			
		B1	B2	B3	B4
CLADOCERA					
Chydoridae					
<i>Alona</i> sp.	Alsp		*	**	
Daphniidae					
<i>Simocephalus punctatus</i> (Orlova Bienkowskaja)	Sipu	*	*	*	
<i>Simocephalus serrulatus</i> (Koch)	Sise	***	*	*	*
<i>Simocephalus</i> sp.	Sisp	*		*	*
Moinidae					
<i>Moina macrocopa</i> (Straus)	Moma	*	*	*	
<i>Moina micrura</i> (Kurz)	Momi	*	**		
Sididae					
<i>Diaphanosoma excisum</i> (Sars)	Diex	**	**	*	
<i>Diaphanosoma</i> sp.	Disp	**	*	*	*
COPEPODA					
Cyclopidae					
Copepodites	Cope	*		*	*
<i>Mesocyclops</i> sp1.	Mes1	**	*	**	
<i>Mesocyclops</i> sp2.	Mes2	**	**	**	
Copepod Nauplii	Naco	*	**	*	
Diaptomidae					
<i>Aglaodiaptomus leptopus</i> (Light)	Agle	*	*		*
ROTIFERA					
Asplanchnidae					
<i>Asplanchna</i> sp.	Assp	*		*	*
Brachionidae					
<i>Brachionus bidentatus</i> (Anderson)	Brbi	*	*	*	*
<i>Brachionus patulus</i> (Müller)	Brpa	*	**	*	*
<i>Brachionus quadridentatus</i> (Hermann)	Brqu	**	*		*
<i>Keratella cochlearis</i> (Gosse)	Keco	**		**	
<i>Keratella lenzi</i> (Hauer)	Kele	**	**	*	*
<i>Notholca labis</i> (Gosse)	Nola	**	*	*	
<i>Notholca</i> sp.1	Nos1	**		*	*
<i>Notholca</i> sp.2	Nos2	**	**	*	**
<i>Notholca</i> sp.3	Our 3	**	*	*	*
<i>Notholca</i> sp.4	Nos4	*	**	*	*
Euchlanidae					
<i>Euchlanis</i> sp.1	Eus1	**	*		*
<i>Euchlanis</i> sp.2	Eus2	*	*	*	

Table 2: Continued.

Zooplankton taxa	Acronyms	Stations			
		B1	B2	B3	B4
ROTIFERS					
Hydrachindiae					
<i>Hydracarina</i> sp.	Hysp		**	*	*
Gastropodidae					
<i>Gastropus</i> stylis(Imhof)	Gast	*	**	*	*
Lecanidae					
<i>Lecane bulla</i> (Gosse)	Lebu	**	*		*
<i>Lecanerottenburgi</i> (Lucks)	Lero	*	*	*	*
<i>Lecanesinuata</i> (Hauer)	Lesi	*	*	*	
<i>Lecanes</i> sp.1	The 1	*	*	*	*
<i>Lecanes</i> sp.2	The 2	*	*	*	
<i>Lecanes</i> sp.3	The 3	**	*	*	**
<i>Lecanes</i> sp.4	The 4	*		*	
<i>Lecanes</i> sp.5	The 5	*	**		*
<i>Lecanes</i> sp.6	The 6			**	*
Lepadellidae					
<i>Colurella</i> obtusa(Gosse)	Coob	*	*	*	*
<i>Colurella</i> sp	Cosp	*		*	*
Synchaetidae					
<i>Polyarthra</i> Dolichoptera(Idelson)	Podo	**	**	*	
<i>Polyarthra</i> sp.1	Pos1	*	**	*	*
<i>Polyarthra</i> sp.2	Pos2	**	*	*	*
Trichocercidae					
<i>Trichocerca</i> flagellata(Hauer)	Trfl		*	*	*
<i>Trichocerca marina</i> (Daday)	Trma	*	*	*	*
<i>Trichocerca porcellus</i> (Gosse)	Trpo	**	**	*	*
<i>Trichocerca</i> sp.	Trsp	*	*		*
<i>Trichocerca</i> temuior(Gosse)	Trte	*	*		*
Trochosphaeridae					
<i>Filinia</i> opoliensis(Zacharias)	Fiop	*	*	*	*
<i>Filinia</i> terminalis(plate)	Fite	*	**	*	
TOTAL	49	46	42	42	34

**Quantitative analysis of the zooplankton population:
Spatial and seasonal variations in zooplankton abundance: -**

Figures 2 and 3 show the spatial and seasonal variations in the absolute and relative abundances (with relative densities greater than 4% at the Banco River stations) of the main zooplankton groups in the Banco River. However, no significant differences were observed between stations or between seasons (Kruskal -Wallis test; $p > 0.05$). The highest zooplankton density (3680 Ind/L) was recorded at station B1 during the major rainy season (MWS), while the lowest density (100 Ind/L) was noted at station B4 during the major dry season (MWS). At all sampling stations, a clear predominance of the Rotifers group was recorded. Rotifers represent the most dominant group with a total of

20,860 Ind/L, or 74.23%. The taxa that contribute to this increase in abundance are: *Filiniaterminalis*, *Trichocercamarina*, *Colurellasp*, *Lecane bulla*, *Eucharis sp*, *Brachionuspatulus*, *Brachionusquadridentatus*, *Notholcalabis*, *Notholca sp.4*, *Hydracarina*sp, *Gastropusstylis*, *Trichocerca porcellus*, *Keratellacochlearis*, *Polyarthrasp.2*, *Asplanchnasp.*, *Lecane sp.5*, *Trichocerca sp.*

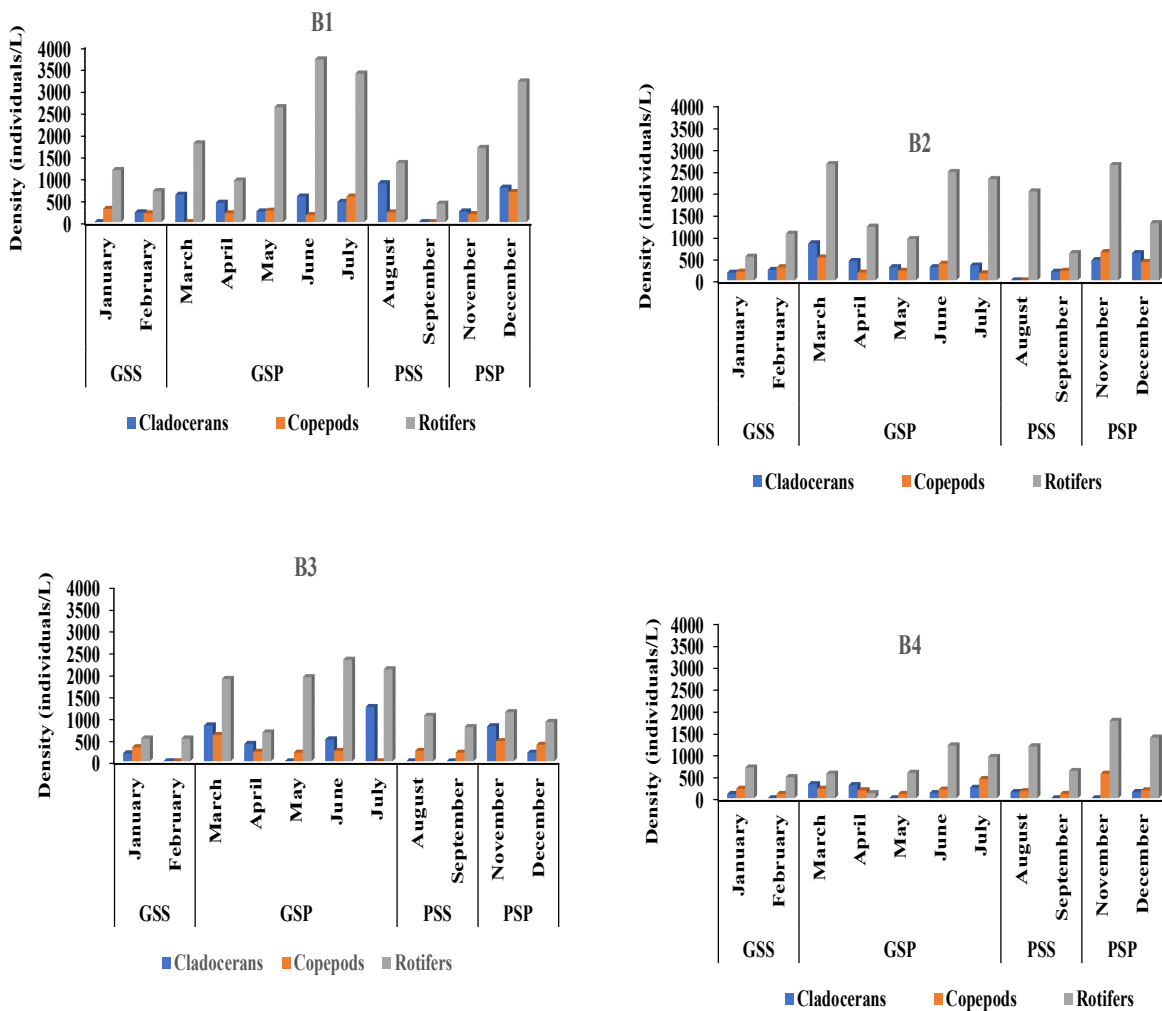


Fig 2: Absolute abundance of Zooplankton communities collected in the Banco River from July 2020 to June 2021. B1-B4: Sampling stations, GSS = Great Dry Season; GSP = Great Rainy Season; PSS = Short Dry Season; PSP = Short Rainy Season.

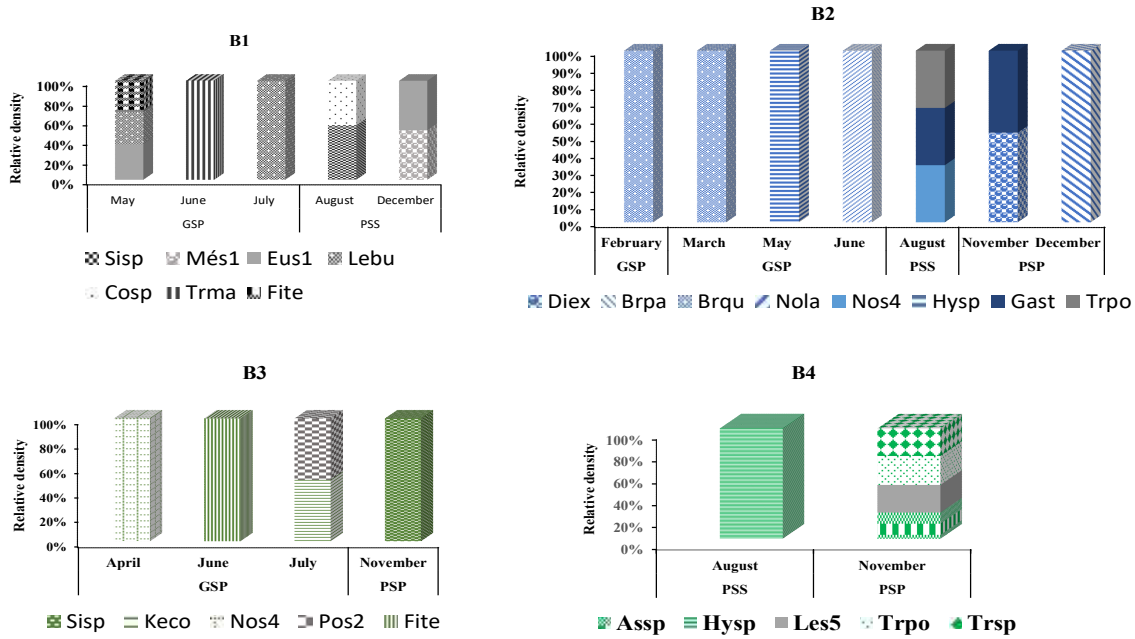


Fig 3: Relative abundance of zooplankton communities collected in the Banco River from July 2020 to June 2021. B1-B4: Sampling stations; GSS = major dry season; GSP = major rainy season; PSS = minor dry season; PSP = minor rainy season.

Diversity Index: -Figure 4 shows the spatial and seasonal variations of the Shannon diversity index and the evenness index of zooplankton communities in the Banco River. These two indices were not significantly different between sampling sites and seasons (Kruskal -Wallis, $p > 0.05$). The highest Shannon index value (3.07 bits/ cell) was recorded at station B1 during the main rainy season, and the lowest (0.68 bits/ cell) at station B3 during the main dry season. The maximum (0.95) and minimum (0.48) values of the fairness index were observed at station B1 during the major rainy season and the minor dry season respectively.

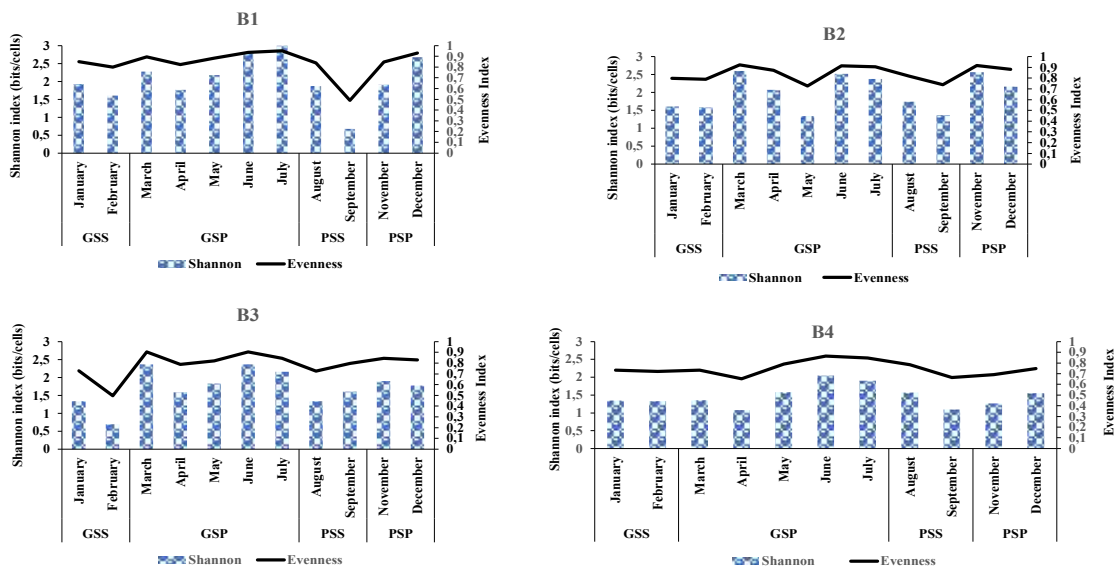


Fig 4: Spatial and seasonal variations of Shannon-Weaver (H) diversity and zooplankton community evenness indices collected in the Banco River from July 2020 to June 2021. B1-B4: Sampling stations; GSS = Great Dry Season; GSP = Great Rainy Season; PSS = Short Dry Season; SSP = Short Rainy Season.

Influence of environmental variables on population distribution:

Correlations between dominant taxa (those with a relative abundance greater than 4% in Banco River stations) and environmental variables, as determined by Canonical Redundancy Analysis (RDA), are shown in Figure 5. The first two axes (axis 1 and axis 2) accounted for 65.5% of the total variance. Axis 1, which accounted for 37.7% of the total variance, is positively correlated with ammonium, dissolved oxygen, and conductivity. These parameters are weakly and positively correlated with *Filinia* species. *terminalis* (Fite), *Asplanchna* sp. (Assp.) at station B3 during the main rainy season (GSP). This axis is negatively correlated with COD, phosphorus, and turbidity. These parameters are negatively correlated with *Gastropus* species. *stylifer* (Gast), *Trichocerca* sp. (Trsp), *Diaphanosoma* *excisum* (Diex), *Keratella* *cochlearis* (Keco) at station B3 during the long rainy season (LWS) and the long dry season (LWS). The second axis represents 25.8% of the total inertia and is strongly and positively correlated with nitrate and BOD5. These are associated with the species *Lecanosp.5* (Les5) at station B4 during the short rainy season. This same axis is negatively and weakly correlated with temperature and the species *Trichocerca marina* (Trma) at station B1 during the long dry season (LWS).

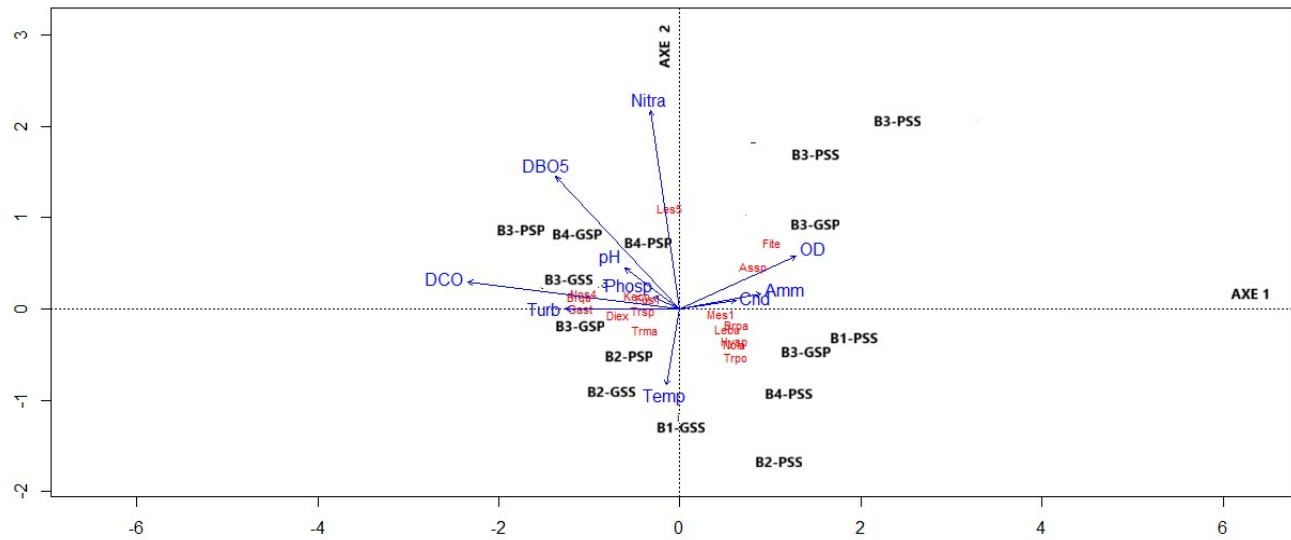


Fig 5: Ordering in RDA of dominant zooplankton taxa and physical and chemical parameters of the Banco River waters. B1-B4: sampling stations; (Acronyms: see Table II); Temp: temperature; pH: potential of hydrogen; Cnd: conductivity; O2: dissolved oxygen; Turb: turbidity; Amm: ammonium; Phosp: orthophosphates; BOD5: 5-day biochemical oxygen demand; COD: chemical oxygen demand; GSS: major dry season; GSP: major rainy season; PSS: minor dry season; minor rainy season;

Assessment of the ecological quality of the waters of the Banco River:-

The Cladoceros/Rotifer (C/R) index:-

Table III presents the spatial and seasonal variations of the Cladoceran/Rotifer (C/R) ratio in the Banco River. The analysis highlights dominant eutrophication in the majority of stations (B1, B2, B3) with generally low C/R ratio values (0 to 0.5). Across all stations (B1, B2, and B3), the C/R ratio values indicate a eutrophic ecological state regardless of the season. In contrast to station B4, the values indicate oligotrophic variation during the dry season (1.09) and mesotrophic variation during the rainy season (0.97).

Table II: Spatial and seasonal variation of the C/R ratio of the Banco River

Sites	Seasons	Report C/R	Ecological state
B1	GSS	0.234	Eutrophe
	GPS	0.171	Eutrophe
	PSS	0.5	Eutrophe
	PSP	0.209	Eutrophe

B2	GSS	0.262	Eutrophe
	GPS	0.232	Eutrophe
	PSS	0.007	Eutrophe
	PSP	0.275	Eutrophe
B3	GSS	0.17	Eutrophe
	GPS	0.333	Eutrophe
	PSS	0	Eutrophe
	PSP	0.495	Eutrophe
B4	GSS	1.104	Oligotrophic
	GPS	0.99	Mesotroph
	PSS	1.077	Oligotrophic
	PSP	0.95	Mesotrophe

Discussion:-

The physical and chemical parameters of the Banco River waters varied from station to station and over time. The high temperature during the dry season can be explained by the fact that during this season, the air temperature due to solar radiation is at its maximum. Indeed, during the dry season, the air is dry and hot, the water velocity is zero, and the canopy cover is zero, especially at station B1. This result is similar to those of Soro et al., 2020, for the Upper Bandamabasin. High BOD5 and COD values were recorded during the rainy season. These high BOD5 and COD values during the rainy season can be explained by runoff. Indeed, rainwater causes significant runoff, which carries organic matter, animal waste, and sediments into waterways. This organic matter increases the amount of substrate available for microorganisms. This result is consistent with those of Buhungu et al., 2018, on the Kinyankonge River in Burundi.

During this study in the Banco River, 50 zooplankton species were recorded and divided into three main groups: 36 Rotifers, 6 Copepods, and 8 Cladocera. The dominance of Rotifers can be explained by their low predation pressure (Lampert and Sommer, 2001; Kuczyńska-Kippen and Basińska, 2008), their life cycle, reproductive mode, and tolerance to a variety of environmental factors (Bennett and Borass, 1989; Badsı et al., 2010). Indeed, the opportunistic nature of Rotifers allows them to better withstand variations in environmental conditions (Matsumuratundisi et al., 1990). Furthermore, their high competitiveness, due to their dietary plasticity with respect to available resources and their small size, makes them less vulnerable to predation pressure (Dumont, 1994). These results are also similar to several studies conducted on the Bandama River. The species richness obtained is very close to that reported by De Ridder and Pourriot (1984) with 53 species in the Bandama in Côte d'Ivoire. However, it remains much higher than the species richness reported in the Ogba and Iyiakwu Rivers in Nigeria, which contain 25 and 27 species respectively by Anyanwu et al. (2021) and Anyanwu et al. (2022); in the Agnéby and Bagoé Rivers in Côte d'Ivoire with 30 and 38 species respectively by Ouattara et al. (2007) and N'Da et al. (2015); and for the Comoé River, also in Côte d'Ivoire, with 20 taxa by Yao et al. (2015). But this taxonomic richness is lower than that recorded by Arimoro and Oganah (2010) and Houssou et al. (2017) on the Orogo River in Nigeria and in the Ouémé River basin in Benin, respectively 79 species and 102 species; by Gouton et al., 2024 in the Okpara River in Benin with 68 taxa; and by Ouattara et al., 2007 in the Bia River basin in Côte d'Ivoire with 64 taxa. Indeed, these differences in the taxonomic richness of the zooplankton community could be related to sampling effort.

Zooplankton density varied from 100 Id/L at station B4 (the dry season) to 3680 Id/L at station B1 (the rainy season). The increase in zooplankton density during the rainy season in the Banco River could be linked to the influx of rainwater laden with various nutrients. Indeed, warm, nutrient-rich waters provide a rich environment for the development of microalgae and zooplankton (Makaoui et al., 2005; Somoue et al., 2013). Furthermore, the highest zooplankton abundance at station B1 could be related to the abundance of microalgae at this station. This result corroborates those of Ouattara et al. (2007) in the Bia River in Côte d'Ivoire. The highest value of the Shannon index (3.07 bits/ cells) was recorded (3.07) at station B1 during the major rainy season and the lowest (0.68 bits/ cells) at station B3 (0.68 bits/ cells) during the major dry season. The low Shannon-Weaver index values recorded at station B3 indicate the presence of predominant species such as *Brachionus. quadridentatus* and *Filina*. The Shannon-Weaver diversity index can be used to assess the pollution of a river's waters. According to Simboura & Zenetos (2002), if this index is between 0.5 and 3, the water is in poor ecological condition and is classified as heavily polluted; if the index is greater than 3, the waters are moderately polluted and promote zooplankton development and diversity. According to these authors, station B3 is heavily polluted and station B1 is moderately polluted. These results corroborate those reported by Buhungu et al. (2017; 2018) on the Kinyankonge River.

Diversity indices revealed that the zooplankton species found at station B3 tolerate heavily polluted waters and could be considered as bioindicators of pollution. Redundancy Analysis revealed a seasonal discrimination of samples based on zooplankton biomass. Rainy seasons are characterized by a dominance of rotifers, while dry seasons are distinguished by a dominance of copepods and cladocerans. The rotifer dominance observed during the rainy season can be explained by the fact that rainfall at this time of year leads to soil leaching, increasing the organic matter and nutrient load, which promotes the growth of microalgae and bacteria, major food sources for rotifers. The eutrophic state observed at stations B1, B2, and B3 indicates pollution in this river. This situation could be explained by the fact that these stations are located on the main watercourse, which is subject to numerous human activities (urbanization, domestic wastewater, agricultural activities, etc.), and runoff from various municipalities of Abidjan contributes to nutrient enrichment of the water at these stations. The oligotrophic state recorded at station B4 during the dry season is likely due to the fact that this station is located on a tributary of the river and is free from any human disturbance. These results are consistent with those observed for the Muha River flowing through the city of Bujumbura (Mpawenayo & Niyondiko, 2013).

Conclusion:-

Physical and chemical analyses conducted on the Banco River revealed organic pollution from domestic wastewater discharges from homes located along its banks. The taxonomic composition of the zooplankton shows that species that thrive in environments polluted by organic matter are the ones that proliferate abundantly in this river. However, dissolved oxygen and turbidity are the environmental variables that significantly influence the diversity and abundance of zooplankton communities in the Banco River. Based on the results, measures to control water pollution are a priority for the long-term protection of this aquatic ecosystem. Raising awareness among the local population is essential for the preservation of the waterway.

Acknowledgements:-

Authors wish to thank National authorities of Department of Aquaculture and Fisheries Dr. Shep Helguile, Mrs. Hema Catherine and M. Allou Jacques Aka for their administrative assistance.

Reviewers are also thanked for the time dedicated and their comments.

Funding:-

Not applicable

Declaration of competing interests:-

The authors report no declarations of interests

Bibliographical References: -

1. Agadjihouédé, H.; Bonou, C.A.; Chikou, A. and Laleye, P. (2010). Comparative production of zooplankton in ponds fertilized with poultry manure and cow dung. *International Journal of Biology and Chemical Sciences* 4: 432-442.
2. Aka, N.M.; Pagano, M.; Cecchi, P. and Corbin, D. (2010). Identification of some copepods from small reservoir lakes in northern Côte d'Ivoire. *Futures of Technology and Documentation* 1-7

3. Aka, N.M.; Pagano, Saint-Jean, L.; Arfi, R.; Bouvy, M.; Cecchi, P.; Corbin, D. and Thomas, S. (2000). Zooplankton Variability in 49 Shallow Tropical Reservoirs of Ivory Coast (West Africa) *International Review of Hydrobiology* 85:491-504.
4. Anyanwu, E.D.; Adetunji, O.G. and Umeham, S.N. (2021). Water quality and zooplankton community of the Eme River, Umuahia, Southeast Nigeria. *Limnology and Freshwater Biology* 5:1186-1194.
5. Anyanwu, E.D.; Orjikwe, C.J. and Chinasa, P.O. (2022). Water Quality and Zooplankton Assessment of Iyiaoku River, Southeast Nigeria. *Ekologia Bratislava* 4: 9–16.
6. Arimoro, F.O. and Oganah, A.O. (2010). Zooplankton community responses in a disturbed tropical stream in the Niger Delta, Nigeria. *Open Environmental Biology and Monitoring Journal* 3: 1-11.
7. Badsì, H.; Ali, O.H.; Loudiki, M.; El-Hafa, M. and Aamari, A. (2010) Ecological factors affecting the distribution of zooplankton community in Massa Lagoon (Southern Morocco). *African Journal of Environmental Science and Technology* 4: 751-762.
8. Bansode, P.S. and Pawar, P. (2023). Diversity of Zooplankton in River Nira Near Pune City, India. *International Journal of Zoological Investigations* 9: 217-226.
9. Bennett, W.N. and Borass, M.E. (1989). A demographic profile of the fastest growing metazoan: a strain of *Brachionus calyciflorus* (Rotifera). *Oikos*, 55: 365-369.
10. Bouazzara, A.; Guevara, H. and Samraoui, B. (2022) Composition and Seasonal Variation of Zooplankton in the Wadi M'zi (Saharan River, Algeria). *Water and Environment journal* 36:31-41.
11. Brito, S.L. Maia-Barbosa, P.M. & Pinto-Coelho, R.M. (2011). Zooplankton as an indicator of trophic conditions in two large reservoirs in Brazil. *Lakes & Reservoirs: Research and Management* 16:253–264.
12. Buhungu, S.; Montchowui, E.; Barankanira, E.; Sibomana, C.; Ntakimazi, G. and Bonou, C.A. (2018). Spatio-temporal characterization of the water quality of the Kinyankonge River, a tributary of Lake Tanganyika, Burundi. *International Journal of Biological and Chemical Sciences* 12: 576-595.
13. Dajoz, N. (2000). *A Concise Guide to Ecology*. Seventh edition. Dunod, Paris, 615 p
14. De Ridder, M. and Pourriot, R. (1984). Rotifer population of the Bandama basin, Ivory Coast. *Revue d'Hydrobiologie Tropicale* 17 : 287-294.
15. Diomandé, A.; Etilé, R.N.; Kamelan, T.M.; Berté, S. and Kouamelan, E.P. (2018). Spatio-temporal variation of the zooplankton population in the Hana River in Taï National Park (West Africa). *Journal of Biodiversity and Environmental Sciences* 13:236-250.
16. Dumont, H.J. (1994). The distribution and ecology of the fresh-and brackish water medusa of the world. *Hydrobiologia* 272:1-12.
17. Dussart, B.H. (1980). Copepods. *Copepods In: ORSTOM ed., IDT 44 Aquatic Flora and Fauna of Sahelian-Sudanian Africa I*. Paris, 1: 333 – 356.
18. El Batoul, A.; Bensouilah, and Slimani, (2023). Comparative Study of Zooplankton Dynamics (Cladocerans and Rotifers) in Relation to Abiotic Parameters in Two Aquatic Ecosystems. *Applied Ecology and Environmental Research* 21:1-16.
19. Gavrilko, D.; Zhikharev, I. and Berezina, N. (2024). Long-Term Monitoring of Zooplankton (Rotifera, Cladocera, Copepoda) in the Tributaries of the Cheboksary Reservoir (Russia). *Environmental Monitoring and Assessment*, 196.
20. Gouton, R.R.T.; Abahi, K.S.; Gnohossou, P.M.; Akodogbo, H.H.; Dossou-Sognon, F.; Assogba, D.U.H. and Adje, A.S.D.D. (2024). Preliminary study of the diversity and structure of the zooplankton community of the Okpara River in Benin. University of Parakou, Faculty of Agronomy, Laboratory of Ecology, Health and Animal Production (LESPA), Benin, *European Scientific Journal* 20: 175.
21. Hounkpè, J.B.; Kelome, N.C.; Lawani, R.A.N. and Adechina, A. (2017). State of play of the pollution of aquatic ecosystems of Benin (West Africa). *Larhyss* 30: 49-171.
22. Houssou, A.M.; Montchowui, E. and Bonou, C.A. (2017). Composition and structure of zooplankton community in ouémé river basin, republic of Benin. *Journal Entomology and Zoology Studies* 5: 36–344.
23. Idris, B.A.G. (1983). *Freshwater zooplankton of Malaysia (Crustacea: cladocera)*. University Pertanian Malaysia Press, 153 p.
24. Konan, K.S.; Aka, M.K.; Adingra, A.A.; Dongui, B.K. and Gnakri, D. (2008). Seasonal variations in the abiotic parameters of the waters of a tropical lagoon: the Grand-Lahou lagoon, Ivory Coast. *European Journal of Sciences Research* 21: 376-393.
25. Korinèk, V. (1999) *A guide to limnetic species of Cladocera of African inland waters (Crustacea, Brachiopoda) (Using the morphology of parthenogenetic females)*. Volta Basin Research Project, Accra on behalf of International Association of Theoretical and Applied Limnology c/o Department of Biological Sciences 1-57.

26. Kouame, N.G. (2009). Spatio-temporal distribution and natural diet of five amphibian species of the genus *Phrynobatrachus* Günther, 1862 (Banco National Park; Abidjan – Ivory Coast). Doctoral thesis, University of ABOBO-ADJAME, Abidjan, Ivory Coast, 123 p.
27. Kuczyńska-Kippen, N. and Basińska, A. (2008). Spatio-temporal distribution of zooplankton between macrophyte and open water zones of lake Wąsowskie. *Teka Komisji Ochrony i Kształtowania Środowiska Przyrodniczego* 5: 75-84.
28. Lampert, W. and Sommer, U. (2001). *Freshwater ecology*. Wydawnictwo Naukowe PWN, 416 p.
29. Lauginie, F. (2007). Nature conservation and protected areas in Ivory Coast. CEDA/NEI and Afrique Nature (Eds), Ivory Coast, 668 p.
30. Makaoui, A.; Orbi, A.; Hilmi, K.; Zizah, S.; Larissi, J. and Talbi, M. (2005). Upwelling off the Atlantic coast of Morocco between 1994 and 1998. *Comptes Rendus Geoscience* 337: 1518-1524
31. Mangoua, A.L.C.; Coulibaly, L.; Manizan, P. and. Gourene, G. (2009). Influence of the supernatant water column on the purification efficiency of a submerged sand filter for the treatment of surface water polluted by domestic wastewater (Banco River, Ivory Coast). *European Journal of Scientific Research* 38: 6–19.
32. Matsumura- Tundisi, T.; Neumann-Leitão, S.; Aguenta, L.S. and. Miyahara, J. (1990). Eutrofização de Represa de Barra Bonita. Structure and organization of the rotifera community. *Brazilian journal of Biology* 50: 923-935.
33. Monney, A.I. (2017). Diversity and spatiotemporal variations of zooplankton communities in different hydrosystems of southeastern Ivory Coast. Doctoral thesis, Félix Houphouët Boigny University, Abidjan, 218 p.
34. Mpawenayo, B. and Niyondiko, C. (2013). Study of diatomic flora in relation to habitat heterogeneity and electrical conductivity of the Muha River waters in Bujumbura. *Sciences of the National Institute of Environment* 12: 1-13.
35. N'Da, S.A.; Etilé, R.N.; N'zi, K.G.; Berté, S. and N'douba, V. (2015). Composition and Distribution of Zooplankton Relationship to Environmental Factor in a Tropical River: (Bagoé, Ivory Coast). *International Research Journal of Biological Sciences* 4:1-11.
36. Ouattara, I.N.; Ouattara, A.; Koné, T.; N'douba, V. and Gourène, G. (2007). Distribution of zooplankton along two small West African coastal basins (Bia and Agnébi; Ivory Coast). *Agronomie Africaine* 19: 197-210.
37. Owa, F.D. (2013). *Water Pollution: Sources, Effects, Control and Management*. Mediterranean Journal of Social Science 4: 65–68.
38. Pontin, R.M. (1978). *A key to the freshwater planktonic and semi-planktonic Rotifera of the British Isles*. Hyperion Books, United States, 38 p.
39. Pourriot, R. (1980). Rotifers. In: *Aquatic Flora and Fauna of Sahelian-Sudanian Africa*. Office of Overseas Scientific and Technical Research, Paris: 219-244.
40. Rey, J. and Saint-Jean, L. (1980). Branchiopods (Cladocerans). In: *Aquatic flora and fauna of Sahelian-Sudanian Africa* edition, Paris, 307-332.
41. Sanaa, B. (2006). Structure, dynamics and physico-chemical and phytoplanktonic typologies of the Bou Regreg estuary (Moroccan Atlantic coast). Doctoral thesis, Mohammed V-Agdal University of Rabat, Morocco, 252 p.
42. Simboura, N. and Zenetos, A. (2002). Benthic indicators to use in ecological quality classification of Mediterranean soft bottom marine ecosystems, including a new biotic index. *Mediterranean Marine Science* 3 : 77-111.
43. Somoue, L. ;Berraho, A. ;Ettahiri, O. ;Elkhiati, N. ; Ramdani, M. ;Larissi, J. ;Makaoui, A. and Lam, H.T. (2013). The plankton (phytoplankton, zooplankton and ichthyoplankton) of the southern Moroccan Atlantic coast (Cap Boujdor -Cap Blanc). *Works of the Scientific Institute, Rabat, Zoology Series* 49: 7-18.
44. Soro, T.A. Etilé, R.N. & Gooré Bi, G. (2020). Variation in the abundance of copepod nauplii and influence of environmental variables on their development in the waters of the upper bandama (Ivory Coast). *J. W. Sci.*, 32:421-431.
45. Viroux, L. (2002). Seasonal and longitudinal Distribution of Zooplankton (Cladocera and copepoda) along the Belgian Course of the River Meuse. *Hydrobiologia* 486:191-202
46. Voigt, M. and Koste, W. (1978). *Rotatoria Die Radertiere Mitteleuropas*. Bornträger, Berlin, 673 p.
47. Yao, A.A.; Konan, K.M.; Ouattara, A. and Gourene, G. (2019). Fish diversity and structure in the Banco stream (Banco National Park, Ivory Coast). *Life and Environment* 69:159-168.
48. Yao, S.S.; Etilé, R.N. and Blahoua, G.K. (2015). Diversity and structure of zooplankton community of Comoé River in relation to environmental factors (Comoé National Park, Ivory Coast). *International Journal of Engineering Research and Management* 20 : 68-74.