



ISSN NO. 2320-5407

Journal homepage: <http://www.journalijar.com>

INTERNATIONAL JOURNAL
OF ADVANCED RESEARCH

RESEARCH ARTICLE

A histological study of Sub mucosal glands in oesophagus & small intestine of dog & Rabbit

Dr.Meena Goyal¹, Dr K.Pandher², Dr.Bichitrananda Roul³

1. Prof essor & H.O.D.Department of Anatomy, Pt JNM Medical college,Raipur C.G.

2. Ex-Professor, Department of Anatomy, Pt JNM Medical college,Raipur C.G.

3. Assistant Prof essor, Department of Anatomy, Pt JNM Medical college,Raipur C.G.

Manuscript Info

Manuscript History:

Received: 15 July 2015

Final Accepted: 25 August 2015

Published Online: September 2015

Key words:

Brunner's gland,acini,duodenum

*Corresponding Author

Dr.Bichitrananda Roul

Abstract

Submucosal glands occurred in the esophagus of certain mammals & in the duodenum of all mammals. The Brunner's gland began at the gastrointestinal junction in some animal & showed extension proximally in to pylorus for short distance & occasionally distally in the first part of jejunum. The study was undertaken in the department of anatomy,Pt JNM Medical College during period of 1977 to 1980.Distribution of submucosal glands in the oesophagus and small intestins of dog &rabbit was studied.Submucosal glands of oesophagus were seen only in dog and showed decreased compactness when traced distally.Brunner's glands commenced at the pyloroduodenal junction in all with proximal extension in pylorus of dog .Glands extended upto fourth part of duodenus in rabbit and were confined to the first part in dog .The glands were purely mucous type in dog . In rabbit though the acini were mixed type, the proportion of mucous acini were more in the proximal part of duodenum.Serous acini differentiated prior to mucous

Copy Right, IJAR, 2015,. All rights reserved

INTRODUCTION

submucosal glands occurred in the esophagus of certain mammals & in the duodenum of all mammals.Brunner named these glands as glandular duodeni or pancreas secundarium,since he took them as accessory pancreas.But this term had the disadvantage that it might be misinterpreted to mean all of the glands contained in the duodenum.Middeldorpf (1846) pointed out first that the secretion of these glands differed from pancreatic juice therefore suggested that they might be designated as 'Glands of Brunner' instead of pancreas secundarium.

The Brunner's gland began at the gastrointestinal junction in some animal & showed extension proximally in to pylorus for short distance & occasionally distally in the first part of jejunum .The acini of the glands were composed of mucous cells except in horse & rabbit which had serous cells also.Hosoda (1956) believed on histological ground that the serous cells of Brunner's glands were residue of pancreas.The evidences presented by wolff (1961) weighed heavily against this view.He found the development of serous cels in rabbit was unrelated to the development of pancreas.On the basis of histological evidences available ,the question wheather serous cells were residual of pancreatic zymogen cells has not yet been answered un equivocally.

Submucosal glands of esophagus were also known as esophageal glands.These compound tubular glands had their acini composed of mucous cells.Johns (1952),however ,described the presence of serous cells or demilunes in the submucosal glands of the esophagus in it's upper one third.Similar glands were also found in the lamina propria in the upper & lower part of esophagus & were called superficial glands.

The present work has been undertaken to establish the distribution of sub mucosal glands in the esophagus & Brunner's glands in the intestine of common Laboratory animals

MATERIAL & METHODS

The study was undertaken in the department of anatomy, Pt JNM Medical College during period of 1977 to 1980. For this study 3 dogs & 3 rabbits were studied. The animals were anesthetized in supine position with ether. The thorax was opened by a midline incision. Normal saline was pushed in left ventricle of heart & a nick was made in right atrium for the outflow of fluid. As the blood washed off, the fixative (10% formal saline) was injected. The entire esophagus, small intestine including pyloroduodenal junction in adult animals & entire duodenum from pyloroduodenal junction to fourth part of duodenum in young rabbits were dissected out. Tissues were cut at similar location in all animals. & Tissue prepared for H&E staining. H&E staining was done according to the standard technique as described in Carleton's Histological technique & tissue was studied under microscope.

OBSERVATIONS

Submucosal glands described in the esophagus & duodenum were studied in dog & Rabbit. Histological examination was done to find out the presence, distribution & nature of these tubuloalveolar glands

1. Adult Dog (Canis Familiaris)

(A) Esophagus:

(a) Upper part - The submucosa in the upper part of esophagus was not demarcated from mucosa as the muscularis mucosa was absent. Glandular tissue occupied the space between the epithelium & the muscularis externa & formed a continuous stratum all around the lumen. When traced distally the glandular stratum thickens. The glandular tissue consisted predominantly of mucous acini & serous demilune related with some mucous acini, arranged round the ducts in lobular form, separated from each other by loose connective tissue

(b) middle part - In this part well developed muscularis mucosa having circularly arranged smooth muscle fibres formed a clear demarcation between the mucosa & the submucosa. The glandular tissue in submucosa formed lobules separated from each other by connective tissue encircling them. The glandular tissue were evenly distributed all around but they were not compact as seen in the upper part of esophagus

(c) Lower part - Submucosa was clearly demarcated from mucosa by well developed muscularis mucosa having longitudinally arranged smooth muscle fibres. The glandular tissue present in the submucosa formed a continuous stratum of glandular lobules surrounding the lumen but when traced distally the lobules are separated more & more from each other by greater amount of connective tissue

(B) Small intestine:

(a) pyloroduodenal junction:

In longitudinal section of this junctional region, towards the pylorus, the mucous acini were seen in the deeper part of lamina propria separated from the submucosa by thick muscularis mucosa. When traced distally, few glandular cells were seen in the submucosa. Gradually the glandular tissue became more & more dense. The mucous acini had similar characteristics as seen in the esophageal glands

(b) second part of duodenum: Submucosal glands were not seen. Muscularis mucosa was well marked & thick.

(c) Third part of duodenum: Submucosal glands were not seen

(d) Fourth part of duodenum: Submucosal glands were not seen

(e) proximal piece of jejunioileal part of gut: Submucosal glands were not seen

(f) Terminal piece of jejunioileal part of gut: Submucosal glands were not seen, lymphoid follicles were present occupying the space between the epithelium & muscularis externa replacing the lamina propria, submucosa & muscularis mucosa.

(g) Terminal part of ileum: lymphoid follicles surrounded by connective tissue were seen more frequently. They occupied the space between the mucous membrane & muscularis externa, replacing at places muscularis mucosa & lamina propria.

Adult Rabbit (Lepus Ruficavatus)

(A) Esophagus:

(a) Upper part; No glandular tissue was seen in submucosa

(b) middle part; No glandular tissue was seen in submucosa

(c) lower part; No glandular tissue was seen in submucosa

(B) Small intestine:

(a) pyloroduodenal junction: No submucosal glandular tissue found towards commencement of duodenum, lobules of glandular tissue were found in deeper part of lamina propria & in the submucosa. The glandular tissue mostly consisted of mucous acini with 1-2 serous acini in each lobule.

- (b) second part of duodenum : submucosal glands were found forming a sheet. The thickness of sheet was less than in the region of first part of duodenum. proportion of serous acini was found to be increased but main glandular tissue was of mucous type
- (c) Third part of duodenum: Glands were found to be reduced in submucosa, consisted of mucous & increased number of serous of acini
- (d) Fourth part of duodenum : glandular tissue was seen in the submucosa consisting mainly of serous acini alongwith few mucous acini & associated ducts distributed throughout the circumference evenly
- (e) Proximal piece of jejuno-ileal part : No glands were seen in submucosa except in one animal in which 2-3 small patches of serous acini were seen at places
- (f) Distal piece of jejuno-ileal part : no glands were seen in submucosa. muscularis mucosa was well formed & continuous
- (g) Terminal part of ileum : no glands were seen in submucosa. muscularis mucosa was well formed & continuous

DISCUSSION

Number of workers made observations on submucosal glands of oesophagus and duodenum in different animals and did pre and post natal studies. In the present work the presence, distribution and nature of these glands in dog & rabbit was examined .

OESOPHAGUS:

Oesophageal glands were found to be present only in dog. Rabbit showed total absence of these glands. Bloom and Fawcett (1970) also mentioned that in some species like rodents, horse and cat no glands were found.

Johns (1952) in his post-natal study in man emphasized the presence of superficial and deep glands in the oesophagus. Superficial ones being located in the lower part as minute glandular areas and deep glands, which were numerous, occupied the whole length of oesophageal submucosa. In the present study deep submucosal glands were found to be present throughout the whole length , but the superficial glands were not observed in any part of dog oesophagus.

Schaffer (1897) and Schumacher (1927) stated that the deep glands were solely mucous in type where as Johns (1952) mentioned about the presence of serous acini and demilunes also. The present study was in favour of the later worker as the serous demilunes were seen capping many mucous acini .

Muscularis mucosae did have features similar to the usual description in man where it started at the termination of pharynx and consisted of longitudinally arranged smooth muscle fibres. In the mammals studied it showed species variation. Upper part of oesophagus presented negligible muscularis mucosae in dog and scanty in rat and rabbit. Arrangement of fibres was longitudinal throughout in rabbit .In dog it was thick circular in the middle third and longitudinal in the lower.

Muscularis externa was found to be arranged in two layers in dog , as is usually described but in rabbit an additional thin outer longitudinal layer was also seen . The muscle was of skeletal variety in all the three animals throughout the whole length of oesophagus. This finding was in contrast to common description in man in whom smooth muscle fibres gradually replaced the skeletal muscle fibres from the middle part and in lower third, only smooth muscle was found. Arrangement of muscle fibres described to be irregular by all was seen in the present study also (Bloom & Fawcett, 1970). In rat it was predominantly oblique in both the layer with slight mixing of longitudinal fibres throughout . In dog it was inner longitudinal and outer circular in upper and lower thirds with reversal in the middle . In rabbit however, thick inner and thin outer longitudinal layers were found showing merging with each other through the middle circular layer at places.

SMALL INTESTINE :

Most common site of submucosal glands happened to be the duodenal part of small intestine with possible extension proximally in the pyloric wall and distally in the jejunum. In the present study a search was made from the phloroduodenal region upto terminal part of ileum.

Landboe-Christensen (1944) and Grossman (1958) mentioned that Brunner's glands in man extended into the submucosa propria of pyloric mucosa. In this study similar observations were made in dog where glandular mass resembling Brunner's glands was seen in the lamina propria of the pyloric mucosa and in the mucosa of the duodenum near the pylorus .

The distance, Brunner's glands extended from the pylorus was highly variable between species and within species (Grossman, 1958). This was evident in the present study as well. In dog and rat no submucosal glands were found beyond first part of duodenum whereas in rabbit these glands extended upto the fourth part of duodenum . One of

the three rabbits showed Brunner's glands in the submucosa of the proximal part of jejunum also. Villemain (1922) and Landboe Christensen (1944) reported the extension of glands in the jejunum of some young human subjects. In the present study the extension of glands into the jejunal submucosa could not be correlated with age. On the contrary this particular rabbit belonged to the older age. This difference in extent appears to be an inter species variation.

Kuozynske (1890) correlated the short extent of the glands in cornivera, moderate in omnivore and longer in herbivore and classified the extent accordingly. In the present study the longer extent was observed only in rabbit who happened to be herbivorus.

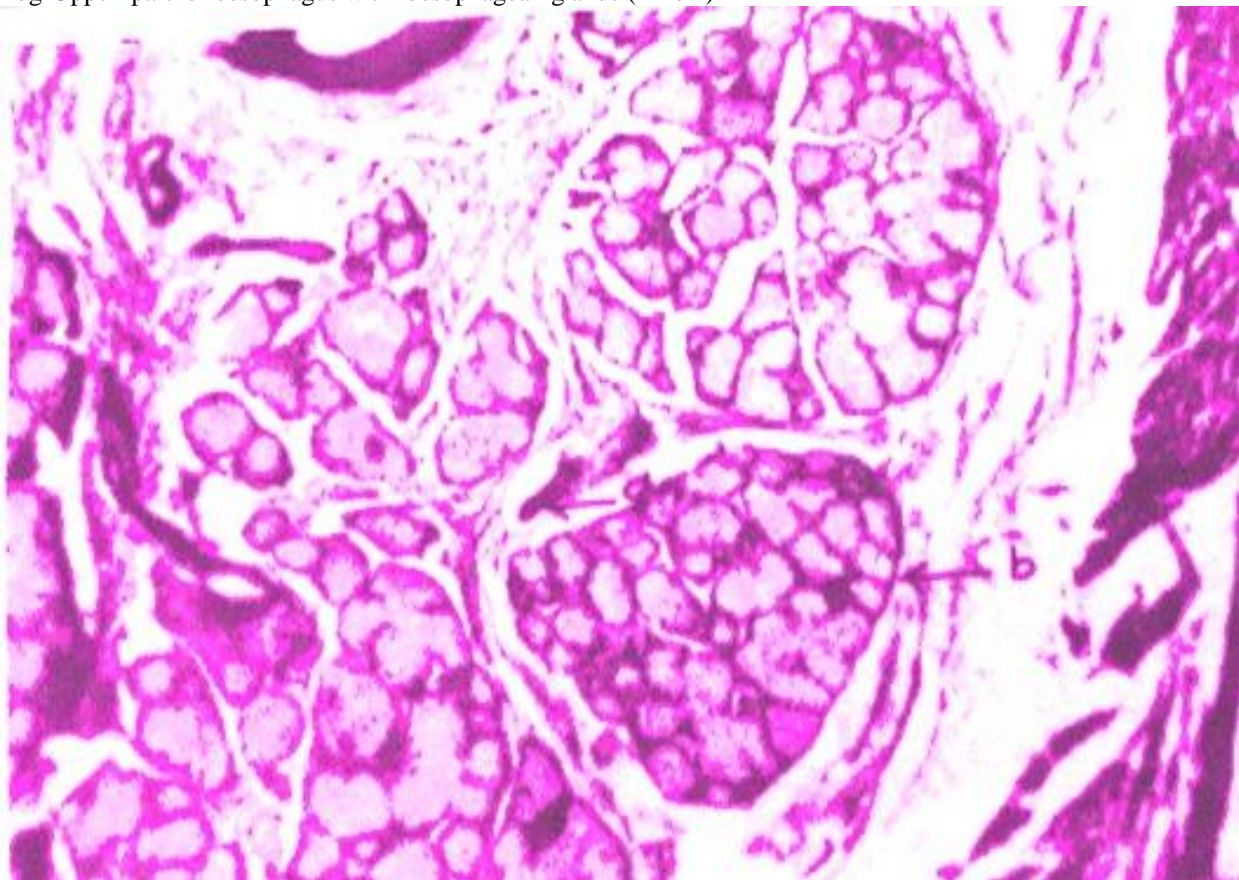
As reported by Bensley (1903) the lower limit of extent of glands was above the entrance of the bile and pancreatic duct in dog and rat as glands were not seen even in the proximal portion of the second part of duodenum in both these animals. According to Villemain (1922) the lower extent of glands in rabbit could be related to the opening of pancreatic duct in the fourth part of duodenum.

Krause and Leeson (1967) working on rat and Landboe Christensen (1944) on man mentioned that the compactness of glands was most marked at the beginning and when traced distally away from the pylorus, the continuity of the glandular tissue was lost and small separate lobules were found scattered in the submucose. In the present study the compactness was gradually reduced distsly and in the lower most part, glandular tissue was seen in the form of few acini and ducts. Even in rat in which glands were extending proximally in the pyloric wall the compactness was most marked close to the pyloric part as seen by Krause and Leeson (1967) also.

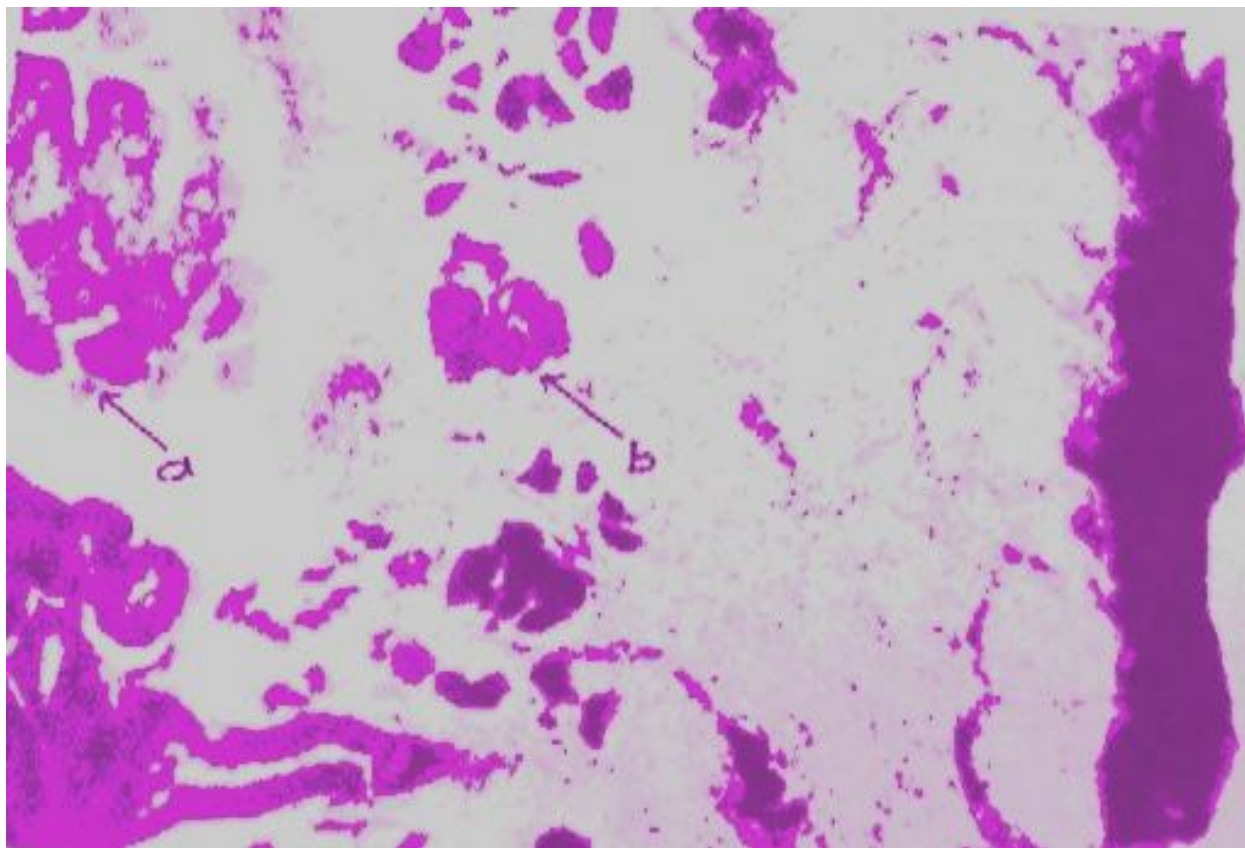
In dog Brunner's glands were exclusively of mucous type. The ducts were lined by cuboidal or low columnar type of celled. The rabbit, however, showed the presence of serous acini also. Schwabe (1872), Bensley (1903), Florey and Harding (1933) and Hosoda (1956) remarked that the tubules and acini were composed of mucous cells except in rabbit and horse which had two cell types mucous and serous.

The ducts draining the glands were found opening in the deeper parts of crypts of Lieberkuhn in all the three animals studied. However, glands present in the substantia propria of dog's pylorus were seen opening in the deeper parts of pyloric glands.

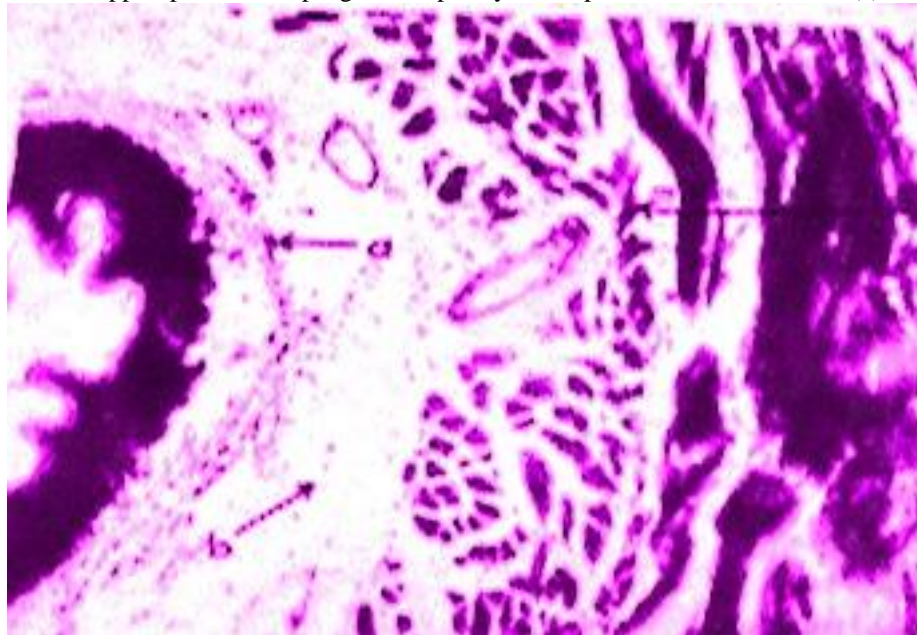
Dog-Upper part of oesophagus with oesophageal glands (Arrow)



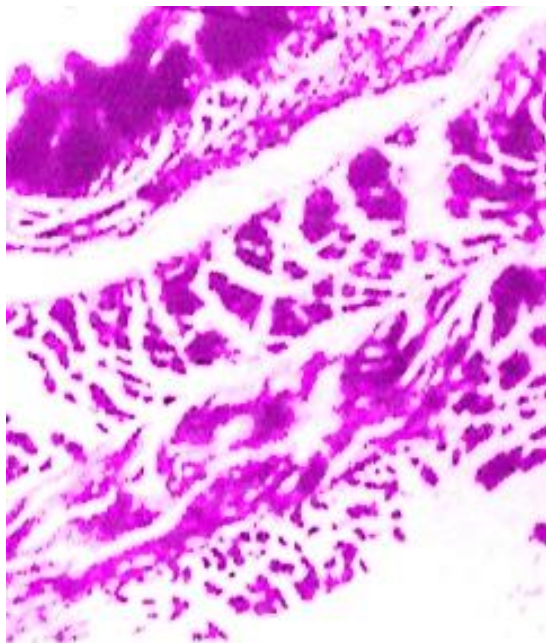
Dog- lower part of oesophagus with well developed muscularis mucosae(a) glands in submucosa(b)



Rabbit- upper part of oesophagus with poorly developed muscularis mucosae(a) no glands in submucosa(b)



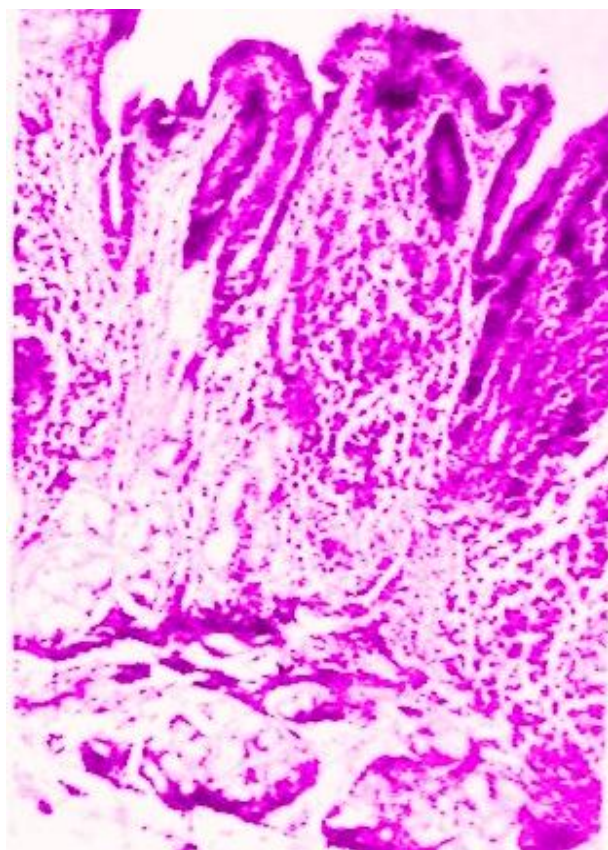
Rabbit- Lower part of oesophagus with no glands in submucosa (arrow)



Dog-pyloroduodenal
Brunner's gland(Arrow)

junction

showing

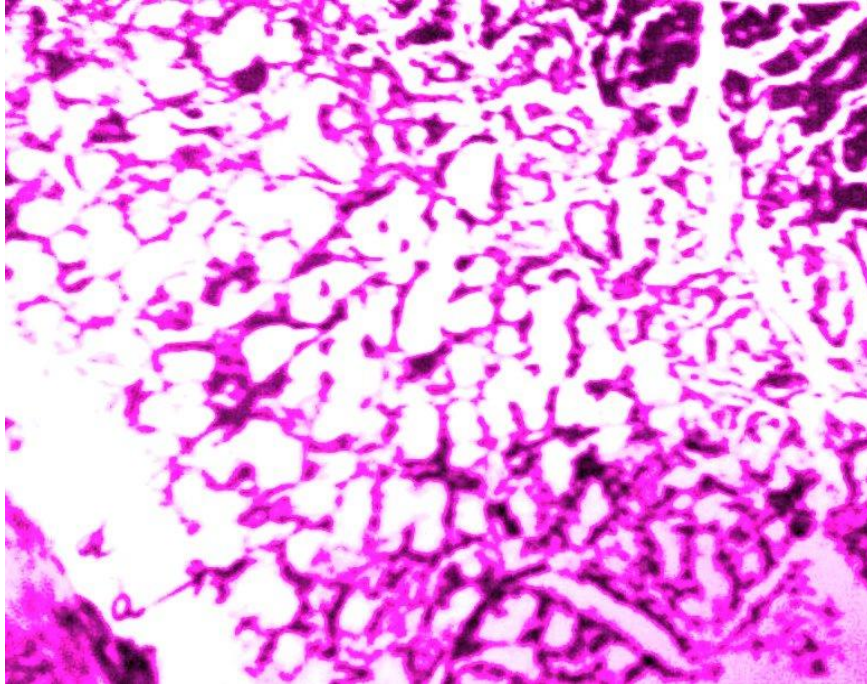


Rabbit-first part
Brunner's glands(arrow)

of

duodenum

showing



SUMMARY AND CONCLUSION

Distribution of submucosal glands in the oesophagus and small intestins of dog & rabbit was studied. Submucosal glands of oesophagus were seen only in dog and showed decreased compactness when traced distally. Brunner's glands commenced at the pyloroduodenal junction in all with proximal extension in pylorus of dog. Glands extended upto fourth part of duodenus in rabbit and were confined to the first part in dog. The glands were purely mucous type in dog. In rabbit though the acini were mixed type, the proportion of mucous acini were more in the proximal part of duodenum. Serosus acini differentiated prior to mucous.

BIBLIOGRAPHY

- BARTH, (1868). Beitrag zur Entwicklung der Darmwand. Besichte der Kaiserl Akademie der Wissenschaften 58, 129-136.
- BENSLEY, R. R. (1903). The structure of the glands of Brunner. University of Chicago Bicennial Publication, Series 10, 277-329.
- BLOOM, W. & FAWCETT, D. W. (1970) in a text book of histology, 9th edition, W. B. Saunders Co. Philadelphia – London Toronto Pg-544-546
- BRAND, E. (1877). Beitrage zur Entwicklung der Magen- und Darmwand. Verhandlungen der Physikalisch-medizinischen Gesellschaft zur Wurzburg 9, 243-256.
- BRODY, S. (1945). Bioenergetics and Growth. New York: Reinhold.
- BRUNNER, J. C. (1688). De glandulis in intestino duodeno hominis detectis. (Dissertation) Heidelbergae. (Quoted by Landboe-Christensen.)
- BRUNNER, J. C. (1715). Glandulae duodeni seu pancreas secundarium in intestino duodeno hominis primum abhinc in aliis quoque animalibus detectum. Heidelbergae. (Quoted by Landboe-Christensen.)
- CARLETON, A. (1935). The distribution of Brunner's glands in the duodenum of mammals. Proceedings of the Zoological Society of London 1, 385-390.
- COCHRANE, W. D., DAVIES, D. V., PALFREY, A. J. & STOCKWELL, R. A. (1964). The histochemistry and electron microscopy of Brunner's glands in the guinea pig. Journal of Anatomy 98, 1-10.
- DOBSON, JESSIE (1962). Anatomical Eponyms, 2nd edn. London: E. & S. Livingstone.
- ELIAS, H. (1947). Comparison of duodenal glands in domestic animals. American Journal of Veterinary Research 8, 311-313.

- ENESCO, M. & LEBLOND, C. P. (1962). Increase in cell number as a factor in the growth of the organs and tissues of the young male rat. *Journal of Embryology and Experimental Morphology* 10, 530-562.
- FLOREY, H. W. & HARDING, H. E. (1934). Further observations on the secretions of Brunner's glands. *Journal of Pathology and Bacteriology* 39, 255-276.
- FLOREY, H. W. (1955). Mucin and the protection of the body. *Proceedings of the Royal Society, Series B*, 143, 147-158.
- FRIEND, D. S. (1965). The fine structure of Brunner's glands in the mouse. *Journal of Cell Biology* 25, 563-576.
- GROSSMAN, M. I. (1958). The glands of Brunner. *Physiological Reviews* 38, 675-690.
- HERBST, J. J. & SUNSHINE, P. (1969). Postnatal development of the small intestine of the rat. *Pediatric Research* 3, 27-33.
- HOSODA, K. (1956). Vergleichende Anatomie der duodenalen Drüsen bei den Rodentia insbesondere die fäulnisstrückter der duodenalen Drüsen. *Vokohama Med. Bull.*, 7, p.170-181.
- JENNINGS, M. A. & FLOREY, H. W. (1956). Autoradiographic observations on the mucous cells of the stomach and intestine. *Quarterly Journal of Experimental Physiology* 41, 131-152.
- JOHNS, B. A. E. (1952). Developmental changes in the esophageal epithelium in man. *J. Anat.* 86, p.431-442.
- JOHNSON, F. P. (1910). The development of the mucous membrane of the oesophagus, stomach and small intestine in the human. *American Journal of Anatomy* 10, 521-561.
- KRAUSE, W. J. & LEESON, C. R. (1967). The origin, development and differentiation of Brunner's glands in the rat. *Journal of Anatomy* 101, 309-320.
- KRAUSE, W. J. & LEESON, C. R. (1969a). Studies of Brunner's glands in the opossum. I. Adult morphology. *American Journal of Anatomy* 126, 255-274.
- KRAUSE, W. J. & LEESON, C. R. (1969b). Studies of Brunner's glands in the opossum. II. Postnatal development. *American Journal of Anatomy* 126, 275-290.
- KRAUSE, W. J. (1970). Brunner's glands of the echidna. *Anatomical Record* 167, 473-488. 789-790.
- KRAUSE, W. J. (1973). Morphological and histochemical features of the duodenal glands in six marsupial species. *Journal of Morphology* 140, 321-342.
- KUCZYNSKE, A. (1890). Beitrag zur histologie der Brunner'schen Drüsen. *Inter. Monatsschr. Anat. Physio.* 7, p.412-446.
- LANDBOE-CHRISTENSEN, E. (1944). The duodenal glands of Brunner in man, their distribution and quantity. *Acta pathologica et microbiologica scandinavica, Suppl.* 52, 1-267.
- LEBLOND, C. P. (1964). Classification of cell populations on the basis of their proliferative behaviour. *National Cancer Institute Monographs* 14, 119-145.
- LEESON, C. R. & LEESON, T. S. (1966). The fine structure of Brunner's glands in the rat. *Anatomical Record* 156, 253-267.
- LEESON, T. S. & LEESON, C. R. (1968). The fine structure of Brunner's glands in man. *Journal of Anatomy* 103, 263-276.
- MANN, V. A., SASSE, D. &
- GRAUMANN, W. (1967). Beiträge zur Funktionsentwicklung duodenaler Drüsen beim Goldhamster. *Acta histochemica* 28, 89-99.
- MARTIN, B. F. (1954). Serous cells in Brunner's glands of the rabbit. *Nature* 174, 1195.
- MARTIN, B. F. (1956). The histochemical distribution of 'lipase' in the alimentary tract and associated glands of laboratory animals. *Journal of Anatomy* 90, 440-454.
- MIDDELDORPF, A. T. (1846). *Disquisitio de glandulis Brunnianis, Vratislaviae*. (Quoted by LandboeChristensen.)
- MOE, H. (1952). On the histochemical demonstration of alkaline glycerophosphatase and its dependence on the incubation time. *Anatomical Record* 112, 217-236.
- MOE, H. (1960). The ultrastructure of Brunner's glands of the cat. *Journal of Ultrastructure Research* 4, 58-72.
- OBUOFORIBO, A. A. (1972). Studies on Brunner's glands of the mouse. Ph.D. Thesis. University of Sheffield.
- OBUOFORIBO, A. A. (1975). Mucous substances in Brunner's glands of the mouse. *Journal of Anatomy* 119, 287-294.

- A. A. OBUOFORIBO AND B. F. MARTIN KRAUSE, W. J. (1971). Brunner's glands of the duck-billed platypus (*Ornithorhynchus anatinus*). *American Journal of Anatomy* 132, 147-166
- PATZELT, V. (1936). Der Darm. In von Mollendorff's Handbuch der mikroskopischen Anatomie des Menschen 5, part 3, p. 172. Berlin: Springer.
- PETERSEN, R. O. & BASERGA, R. (1965). Nucleic acid and protein synthesis in cardiac muscle of growing and adult mice. *Experimental Cell Research* 40, 340-352.
- REDMAN, R. S. & SREEBNY, L. M. (1970). Proliferative behaviour of differentiating cells in the developing rat parotid gland. *Journal of Cell Biology* 46, 81-87.
- SCHAFFER, J. (1904) quoted by John's B.A.E, developmental changes in esophageal epithelium in man. *J. Anat.*, p431-442, 1952
- SCHNEYER, C. A. & HALL, H. D. (1969). Growth pattern of postnatally developing rat parotid gland. *Proceedings of the Society for Experimental Biology and Medicine* 130, 603-607.
- SCHUMACHER, S. (1927), quoted by John's B.A.E, developmental changes in esophageal epithelium in man. *J. Anat.*, p431-442, 1952
- SCHWALBE, G. (1872) ,Beitrage zur kennbiss der drussen in den Darmwandungen, iris Besondere der Brunnerschen Drussen, *ArchMicroskop. ANAT*, 8p-92-140
- THRASHER, J. D. (1966). Analysis of renewing epithelial cell populations. In *Methods in Cell Physiology* 11, 323-357. New York: Academic Press.
- VILLEMEN, F. (1922). Le duodenum de l'homme et des mammiferes. *Archs Morph. gen. exp.* 3, 1-34.
- WEPFER, J. J. (1679). *Cicutae aquaticae historia et noxae*. Basileae. (Quoted by Landboe-Christensen.)
- WOLFF, H. (1961). Entwicklungsgeschichtliche, histochemische und experimentelle Untersuchungen an der Brunnerschen Drusen des Kaninchens. *Zeitschrift fur Zellforschung und mikroskopische Anatomie* 53, 829-856.